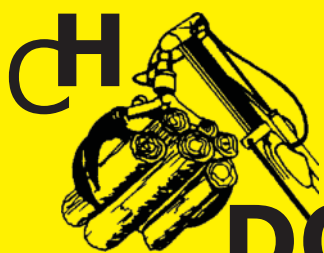


50 years of experience in production & technology



grab- and loading
technology
since 1965

DORN-TEC

DORN-TEC GmbH & Co. KG
Porschestraße 21
D-87437 Kempten
Tel. +49-831-77124
Fax +49-831-79684
info@dorn-tec.de



Your professional partner for



construction and forestry technology



www.dorn-tec.de / www.dorn-tec.com



Geschäftsführer
Dipl.-Ing. (FH)
Christian Dorn

DORN-TEC is a European and German registered trademark of DORN-TEC GmbH & Co. KG.

We offer our customers individual and high-quality solutions of grab and loading-technology, for municipal- and forestry-industry.

From a former pioneer in the grab technology we have developed to one of the most important complete outfitters for the forest technology in Europe.

Our success is based on an easy and proven principle: We offer you reliability, quality and economic efficiency.

More than 10.000 satisfied customers.

You appreciate our 50 years of experience and our wide range of forest equipment - than feel free to contact us at any time.

Full service from DORN-TEC - that includes expert consulting, customized solutions and our own customer service - this saves you time and money.

Motivated employees are there for you.

Our employees are highly qualified and are taking professional care of your orders in our company in Kempten (Allgäu). Especially if you are facing a difficult situation, we are eager to develop a pragmatically customized solution for you.

Our main indicator for success - is your satisfaction.

A European Corporation.

As a customer of DORN-TEC you profit unlimitedly from our high quality products. Our machines run meanwhile in 15 European countries. With many different partners we are represented in numerous areas also on the regional level and work together with an international shipping organisation.

Location / Origin.

Our company is located in Kempten / Allgäu and we are your qualified contact partner for all requirements on professional forest, grab- and loading technology. Since 1965 we work in the field of mechanical engineering and distribution of machines and accessories. We have developed thousands of innovative and individual solutions for our customers.

History.

DORN-TEC GmbH & Co. KG was founded in 1965 and is a traditional German company and since the beginning a family business. Our USP is to offer experienced products, as well as good innovative devices.

Quality and economic efficiency determine our action in service for our customers.

Convince yourself! We are looking forward to provide solutions for you.

Sincerely


Christian Dorn



Team DORN-TEC on a tradeshow assignment



timber grabs TopGrip TG	standard log grabs TGS / TGM / TGL / TGXL	02
hydraulic rotators HDR	hydraulic rotators for cranes and excavators	03
fixed mounted rotators HDR FF	double flange rotators	04
timber grabs PowerGrip PG	professional log grabs	05
brush grabs R4	standard / professional brush grabs	06
control valves and linkages HDG	linkages / hydraulic control valves	07
loader series FLG	front loader grabs	08
loader series FHLG	front rear loader grabs	09
forestry winches SW	forestry winches	10/11
cone splitters KS	excavator splitters	12/13
meter- and short wood splitter	vertical wood splitters HS	14
meter- and long wood splitter	horizontal wood splitters HSL	15
professional disc chippers	wood chippers	16/17
forestry equipment	pallet fork + hydraulic grapple / logging grab	18
forestry equipment	crane winch / hydraulic winches	19
forestry equipment	circular saws / saws with belt / conveyor belts	20
forestry equipment	bundler /hydraulic tractor plateaus	21
forestry equipment	grapple saw / splitting tongs	22
forestry equipment	special forestry equipment	23
universal timber trailer RW	single-axle-forestry trailers RW 60/80	24/25
standard log loaders	forestry cranes 495 / 530 / 650	26/27
forestry trailers RF	tandem forestry trailers RF 70 / 90 / 100 / 100D / 140	28/29
crane series KCF	small forestry loaders KCF 1 / 2 / 3	30
crane series KCF	standard forestry loaders KCF 4 / 5 / 7 / 10 / 12	31
dumper with crane EDK / TDK	three-side-dumpers with forestry loader	32/33
crane Series KCFR	foldable forestry cranes (Z-cranes)	34
loader Series P / CC	rear loaders P / trailed loaders CC	35
excavator Series CLN	universal loaders for tractor coupling	36/37
excavator Series NA	backhoes	38
excavator Series CLNA	combi backhoe loaders	39
generating sets Series ZG	gen sets for tractor coupling	40
forks Series DG/TopStar	forks DG / TopStar changing systems	41
polyp grabs PL / MG	wood polyps PL / orange peel grabs MG	42
clamshell Series V/O	clamshell buckets with vertical / horizontal cylinder	43
clamshell Series T/OL/OP	clamshell buckets with double cylinder / heavy duty	44
clamshell Series OSM/OSL/OS	clamshell buckets for mini-excavators / truck cranes	45
clamshell Series OA/OB	multi-purpose grabs - small / large versions	46
stone grabs Series SG	universal stone- and sorting grabs	47
grapple saws EG	felling heads with chain saw	48
cutting grabs / harvester	energy wood grapples / cutting grabs / harvester	49
earth drills Series KS	auger attachments	50
accessories	crane forks KPG / quick coupler adapters	51
accessories	excavator accessories	52
How you find the right way to us!		53

timber grabs for cranes and mini-excavators

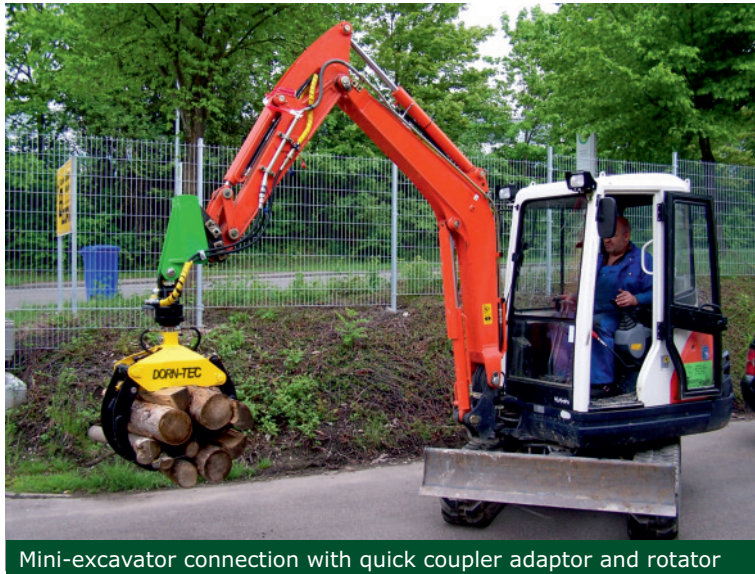
The log grapples of the TopGrip line are the most common, light duty equipment for hobby and semiprofessional usage. Thousand of satisfied customers have already approved our grabs in whole Europe. These small and medium sized wood grapples can be easily adapted to different machines: mini-excavators, forestry cranes, front loaders, hydraulic loaders and wheel loaders which are not intended for an intense work. Light robust construction with an outstanding cost performance ratio. Body construction with covered cylinder, connections and guide bars inside of the grapples. The single hydraulic cylinder provides the right grip for the specific application.

The TopGrip [TG] wood grapples are produced in the sizes Small [S], Medium [M], Large [L] and X-Large [XL].

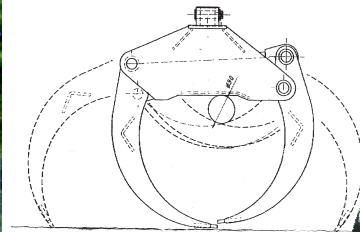
Key benefits of our TopGrip log grabs:

- enforced claws
- strong main frame
- end-to-end bolts
- easy accessible lubrication nipples
- 2 internal guide bars

TopGrip - reliable timber grabs
with an high level of productivity



Mini-excavator connection with quick coupler adaptor and rotator



TG L with shaft rotator HDR 30/45



TG XL with flange rotator HDR 45F



TG M - timber handling



TG M - wood bundle handling

Typen	Typ	S	M	L	XL
Gewicht	weight	50 kg	70 kg	90 kg	110 kg
Griffweite	gripping	900 mm	1000 mm	1200 mm	1400 mm
Greiffläche	grip area	0,16 m²	0,18 m²	0,22 m²	0,25 m²
Arbeitsdruck	pressure	200 bar	200 bar	200 bar	200 bar
Min. Greif-Ø	min. Ø	70 mm	80 mm	90 mm	90 mm
Höhe offen	height	650 mm	710 mm	820 mm	760 mm
Breite	width	230 mm	260 mm	300 mm	330 mm
Empf. Rotator	rotator	HDR 30	HDR 30/45	HDR 30/45	HDR 30/45/45F
Festanbau-Rotator	fix rotator	HDR 30/55FF	HDR 55FF	HDR 55/500FF	HDR 55/500FF

changes reserved at any time

hydraulic rotators for cranes and excavators

We offer the complete range of modern hydraulic rotators for gimbal mounting. Our rotators are equipped to forestry and general cargo cranes, excavators and construction machines. Depending on the demand and grab the rotators are equipped with flange or shaft connection.

We deliver the standard connection dimensions of all well-

known producers. The range includes rotators from 1- 16t, all machines are ISO9001 certified and will be used in forestry, construction and industrial areas.

Our rotators can be easily assembled to nearly all kind of hydraulic grabs.



HDR 30



HDR 45



HDR 45F



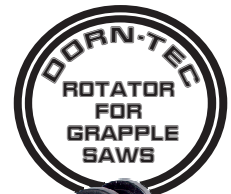
HDR 45FQ



HDR 55



Standard-Typen	Type	HDR 30	HDR 45	HDR 45F	HDR 45FQ	HDR 55
Drehung	rotation	endlos	endlos	endlos	endlos	endlos
Max. Axialbelastung	axial load	3000 kg	4500 kg	4500 kg	4500 kg	5500 kg
Drehmoment	torque	800 Nm	1100 Nm	1100 Nm	1100 Nm	1300 Nm
Min. Ölfluss	oilflow	20 l/min.	20 l/min.	20 l/min.	20 l/min.	20 l/min.
Max. Druck Rotor	press. rotor	250 bar	250 bar	250 bar	250 bar	250 bar
Max. Druck Greifer	press. grab	250 bar	250 bar	250 bar	250 bar	250 bar
Gewicht	w eight	18 kg	25 kg	28 kg	29 kg	29 kg
Anschluss unten	upper	d 49,5/25 mm	d 59/30 mm	LK 173/4x17 mm	140x140 mm	d 69/30 mm
Anschluss oben	low er	d 25/60 mm	d 25/73 mm	d 25/73 mm	d 25/73 mm	d 30/73 mm



HDR 120FS



HDR 60F



HDR 100F



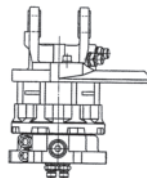
HDR100-2F



HDR 120F



HDR 160F



Profi-Typen	Type	HDR 60F	HDR 100F	HDR 100-2F	HDR 120F	HDR 160F	HDR 120FS
Drehung	rotation	endlos	endlos	endlos	endlos	endlos	endlos
Max. Axialbelastung	axial load	6000 kg	10000 kg	10000 kg	12000 kg	16000 kg	12000 kg
Drehmoment	torque	1600 Nm	2700 Nm	2700 Nm	2900 Nm	3500 Nm	2900 Nm
Min. Ölfluss	oilflow	25 l/min.	30 l/min.	30 l/min.	35 l/min.	40 l/min.	35 l/min.
Max. Druck Rotor	press. rotor	250 bar	250 bar	250 bar	250 bar	250 bar	250 bar
Max. Druck Greifer	press. grab	300 bar	300 bar	300 bar	300 bar	300 bar	300 bar
Gewicht	w eight	41 kg	56 kg	59 kg	68 kg	70 kg	70 kg
Anschluss unten	upper	LK173/6x17 mm	LK173/6x17 mm	LK173/6x17 mm	LK173/6x17 mm	LK173/6x17 mm	LK173/6x17 mm
Anschluss oben	low er	d 35/80 mm	d 35/80 mm	d 35/80 mm	d 45/100 mm	d 45/100 mm	d 45/100 mm

high pressure rotator up to 320bar on demand! changes reserved at any time

double-flange rotators

Unlimited rotatable rotators with double flange for fixed mounting. We offer the complete range of modern hydraulic rotary heads for rigid mounting on excavators and telescopic loaders. Depending on the application and the grab we use rotators in different sizes. The connection is made at the top and bottom with a flange. The double bearing allows the

absorption of the forces in the axial and radial direction. Therefore the rotators can be operated in hanging as well as in rigid attachment. The range includes rotary heads for rigid mounting on excavators from 1.5 to 40.0 t operating weight. They are used for felling-, sorting-, stacking- and demolition-works in forestry, construction and municipal applications.



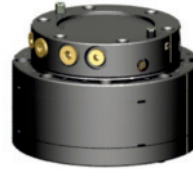
HDR 30FF



HDR 55FF



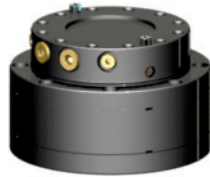
HDR 500FF



HDR 700FF



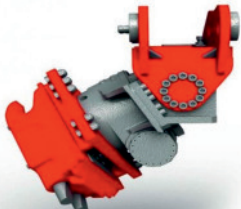
HDR 1000FF



HDR 1500FF



Festanbaurotator Typ	Type	HDR 30FF	HDR 55FF	HDR 500FF	HDR 700FF	HDR 1000FF	HDR 1500FF
Drehung	rotation	endlos	endlos	endlos	endlos	endlos	endlos
Max. Traglast statisch	max. load	3.500 kg	5.500 kg	10.000 kg	14.000 kg	20.000 kg	30.000 kg
Max. Bagger-Tonnage	excavator	2,0 t	3,5 t	6,0 t	8,0 t	11,0 t	21,0 t
Max. Radialbelastung	radial load	15 kN	17 kN	36 kN	40 kN	70 kN	110 kN
Drehmoment	torque	850 Nm	1.400 Nm	1.350 Nm	1.650 Nm	3.000 Nm	5.250 Nm
Ölbedarf je Umdrehung	abs. volume	180 cm ³	250 cm ³	350 cm ³	520 cm ³	940 cm ³	1.600 cm ³
Max. Rotation	max. rotation	35 U/min.	35 U/min.	30 U/min.	30 U/min.	30 U/min.	30 U/min.
Max. Druck Rotator	press. rotator	250 bar	250 bar	250 bar	250 bar	250 bar	250 bar
Max. Druck Greifer	press. grab	250 bar	250 bar	350 bar	350 bar	350 bar	350 bar
Gewicht	weight	22 kg	35 kg	45 kg	55 kg	80 kg	140 kg



Hydraulic twist and rotation solutions - on request -



Bigger rotators on demand!

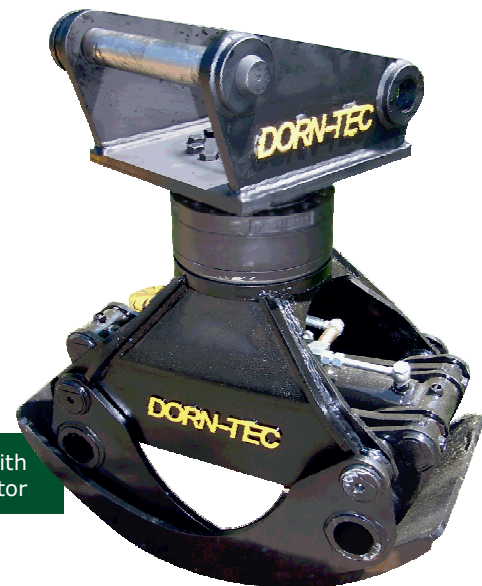
Reinforced grapple - individual adaptation



Timber grab in rigid attachment for felling and feeding works



Stone grab with rigid mounted rotator



Double flange rotator for excavator and wheel loaders

professional timber grabs for cranes and excavators

As a specialist for forest technology DORN-TEC offers a wide range of high performance log grapples. The timber grapples of the PowerGrip line are robust and powerful, perfectly suited for tough applications. They are made to accomplish the requirements of the most demanding forestry professionals. The compact structure, high closing force and light design make them suitable for high performing forestry cranes, forwarders, excavators, skidding cranes and wheeled loaders. The wood

grapples are equipped with a strong hydraulic cylinder, which provides an optimum closing force during the loading. The log grapples are made of high tensile strength steel, induction hardened chrome pins and quality bushings. The optimized design allows a perfect grip in every situation. The cylinder, guide bars and hydraulic connections are well protected into the structure.

Adaption for all loaders made by DORN-TEC.

slewing unit



PowerGrip grab with excavator adaption

DORN-TEC

INFO

quick adaptors

- Lehnhoff
- Schaeff
- Verachtart
- Martin
- etc.



PowerGrip timber grapple



PowerGrip grab for rigid attachment



PowerGrip timber grab in excavator usage



PowerGrip 425 mounted on a telescopic loader

Type	Type	210	265	265S	285	285S	365	425	500
Gewicht	weight	90 kg	120 kg	140 kg	195 kg	235 kg	255 kg	265 kg	420 kg
Griffweite	gripping	1100 mm	1300 mm	1400 mm	1500 mm	1600 mm	1750 mm	1850 mm	2000 mm
Greiffläche	grip area	0,21 m²	0,26 m²	0,26 m²	0,28 m²	0,30 m²	0,38 m²	0,42 m²	0,55 m²
Arbeitsdruck	pressure	200 bar	200 bar	200 bar	200 bar	200bar	200 bar	250 bar	250 bar
Min. Greif ø	min. grip	80 mm	75 mm	80 mm	95 mm	125 mm	125 mm	135 mm	140 mm
Höhe offen	height	630 mm	690 mm	700 mm	700 mm	780 mm	850 mm	900 mm	1000 mm
Breite	width	395 mm	415 mm	415 mm	490 mm	550 mm	500 mm	530 mm	600 mm
Empf. Rotator HDR	rotator	45F	45F	45/60F	60F	60/120F	60/100F	100/120F	120/160F
Festanbau Rotator	fixed rotator	55FF	500FF	500FF	500/700FF	700/1000FF	1000FF	1000FF	1000/1500FF

Bigger grapples on demand!

high pressure cylinder up to 250bar on demand!

changes reserved at any time

front loader grabs

A special frame construction enables an effective usage of a log grab on your front-, telescopic-, wheel-loader or hoftrac for loading and skidding operations. With the DORN-TEC front loader grab you can use your frontloader for transport, loading and unloading logs without leaving the tractor. Equipped with a mechanical rotation linkage or a hydraulic rotator you can operate with your loader like a crane. The selection of the log grab and the rotator depends on the size of the loader or tractor and the individual usage. Our frame construction is well-proved for years. All parts are from our own production in Germany the usage of Quality steels assure great stability on minimum weight.

The modular build-up based on a pallet fork frame guarantees maximum flexibility and offers the possibility to rebuilding a pallet fork. We can also offer a slewable frame or a complete version with single or double hydraulic switch, so that you need just 2 hydraulic connections.

Standard equipment:

- TopGrip timber grab
- hydr. rotator or mech. rotation linkage
- loading frame with cross-pending linkage
- carrier frame with EURO-connection plate
- transport fixation



TopGrip front loader grab from our own German production



equipped with mechanical rotation linkage



crosswise loading side loading of trailers



maximum performance - minimum weight



lengthwise loading rear loading of trailers

FLG Typ	Type	S / 30	M / 30	L / 30-45	XL / 30-45	XL / 45F
Gewicht	weight	180 kg	200 kg	220 kg	240 kg	250 kg
Greiffläche	gripping	0,16 m²	0,18 m²	0,22 m²	0,25 m²	0,25 m²
Arbeitsdruck	pressure	200 bar	200 bar	200 bar	200 bar	200 bar
Holzgreifer	grab	S	M	L	XL	XL
Öffnung	opening	900 mm	1000 mm	1200 mm	1400 mm	1400 mm
Rotator	rotator	HDR30	HDR 30	HDR30/45	HDR30/45	HDR45F
Axiallast	axial load	3,0 t	3,0 t	3,0/4,5 t	3,0/4,5 t	4,5 t
Anschluss	connection	Bolzen	Bolzen	Bolzen	Bolzen	Flansch
Drehbereich	rotation	endlos	endlos	endlos	endlos	endlos
Optional	optional	mech.	mech.	mech.	mech.	mech.

changes reserved at any time

front-rear-loading grab

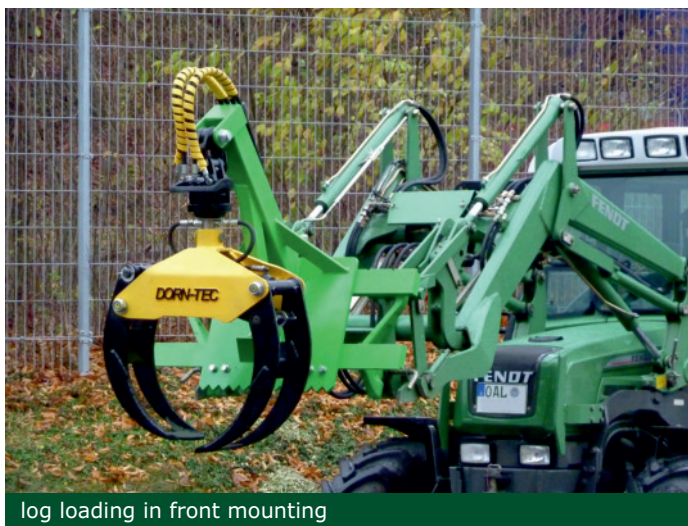
A special frame construction with EURO- and three-point linkage allows the effective application of a timber grapple in the front and rear of a tractor.

Equipped with a mechanical rotation joint or a strong hydraulic rotator you can do multi-purpose works. The choice of the log grapple and the rotators depends on the size of your tractor and the individual usage. Our frame construction is proved for many years and comes exclusively from German production. High-class steels provide big stability on minimum weight. The modular construction grants the highest flexibility. The integrated three-point linkage in the frame allows a high lifting in the rear. So that the grab can be used for real skidding work.

A possible additional electro hydraulic switch provides that you need only 2 connections.

Standard equipment:

- TopGrip round timber grab
- Hydr. rotator or mech. rotary joint
- Loading frame with cross-pending linkage
- Carrier frames with EURO- and three-point-linkage



log loading in front mounting



equipment with mechanical rotating linkage



equipment with strong hydraulic rotator



FHLG from our own production



high rear lifting with integrated three-point



skidding operation in rear connection

FHLG Typ	Type	M / 45	L / 45	XL / 45F
Gewicht	weight	210 kg	230 kg	260 kg
Greiffläche	gripping	0,18 m²	0,22 m²	0,25 m²
Arbeitsdruck	pressure	200 bar	200 bar	200 bar
Holzgreifer	grab	M	L	XL
Öffnungsweite	opening	1000 mm	1200 mm	1400 mm
Rotator	rotator	HDR45	HDR45	HDR45F
Max. Axiallast	axial load	4,5 t	4,5 t	4,5 t
Anschluss	connection	Bolzen	Bolzen	Flansch
Drehbereich	rotation	endlos	endlos	endlos
opt. Drehgelenk	opt. rotation	mech.	mech.	mech.

changes reserved at any time



Our forestry winches have a good spooling behavior, strong pulling force and a powerful band brake.
 Standard equipment: stable safety barriers, high-class painting, upper + lower deflection roll, practical chain traps, strong chain drive, great capacity of the cable drum, easy handling, automatic security band brake, whole steel construction from tempered steel, robust skidding shield and towing device.
 We use compressed high-capacity forest steel ropes or Dyneema plastic ropes. High-quality components, reliable services, specific material choice, high-class accessories like chocker chains, hooks & end fittings, different pulleys, carriages and round slings complete our programme.
 EH-versions with electr. control panel or professional radio control in different models available. Modern manufacturing,

European-wide delivery. For your satisfaction! With our forest winches you get your timber fast, certainly and easily from the wood!

Functionality:

simple and quick connection to all types of tractors, big cable drum capacity, light unwinding of the wire rope, big tractive power and braking power.

Quality:

robust, checked construction, careful material choice, high technological production, 100% of effective final control



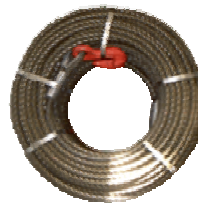
DORN-TEC forest winches - extensive assortment



professional pulley



gas adjustment engine



high-capacity cable ropes



quality cardan shaft



remote control



modern technology - top quality



strong chain drive



pulley with hydraulic drive & stop-switch

changes reserved at any time



constant pulling power -electro-hydraulic gearbox forestry winches



DORN-TEC strong pulling force easy handling



forestry work with mechanical winch



high pulling power - good spooling



1000 times tried and tested design - powerful band brake

electrohydraulic winch 6500 EH with remote control

DORN-TEC Waldprofi			mechanische Seilwinden				elektrohydr. Seilwinden				Spezial	Getriebe-Winde	
Typ	Type		4000	4500	5500	7500	4500EH	5500EH	6500EH	8500EH	5500FEH	6,5 DH	8,5 DH
Windenklasse	w inch		4,0t	4,5t	5,5t	7,5t	4,5t	5,5t	6,5t	8,5t	5,5t	6,5t	8,5t
max. Zugkraft	pulling	kN	35	45	55	75	45	55	65	85	55	65	85
Einzug	velocity	mt/s	0,90	0,90	0,90	0,60	0,60	0,60	0,60	0,60	0,60	0,60	0,60
Empf. Seillänge	rec. wire	mt	d8/70	d9/70	d10/70	d12/80	d9/70	d10/70	d11/80	d13/100	d10/70	d11/100	d13/100
Seilkapazität (max.)	max. wire	mt	d9/100	d9/130	d10/105	d12/100	d9/130	d10/105	d12/100	d13/110	d10/105	d11/190	d13/130
			d8/105	d8/170	d9/130	d11/120	d8/170	d9/130	d11/120	d12/140	d9/130		
Schildbreite	shield	mm	1215	1415	1515	1620	1415	1515	1620	2020	1515	1800	2020
Höhe ohne Gitter	height	mm	1320	1480	1580	1770	1480	1580	1770	1770	1800	1800	1800
Höhe mit Gitter	height	mm	2100	2300	2300	2300	2300	2300	2300	2300	2300	2300	2300
Gew icht (ohne Seil)	w eigh t	kg	250	340	350	580	380	415	620	700	450	735	835
Empf. Schlepper	tractor HP	PS	20-45	30-60	45-70	70-100	30-60	45-70	60-100	80-130	45-70	65-130	85-180
Untere Umlenkrolle	low pulley		Serie	Serie	Serie	Serie	Serie	Serie	Serie	Serie	Serie	---	---
Zugmaul	tow ing		Serie	Serie	Serie	Serie	Serie	Serie	Serie	Serie	Serie	Serie	Serie
Funkausrüstung	remote		---	---	---	---	Optional	Optional	Optional	Optional	Optional	Optional	Optional
Langs. Seileinzug	rec. velocitv		---	Optional	Optional	Serie	Serie	Serie	Serie	Serie	Serie	Serie	Serie

special- and double drum winches on demand!

changes reserved at any time

cone wood splitters



Our DORN-TEC cone wood splitters for excavator attachment are proven for many years in practical usage. The splitters are manufactured, assembled and individually adapted in our factory.

We supply cone wood splitters for carrier machines of 1.5 to 20.0 ton. service weight.

Our professional drive works with a robust planetary gearbox with oil bath lubrication for a long life usage. The splitters can be attached to excavators, backhoe loaders, wheel loaders, front loaders, compact or telescopic loaders. Cone splitters - are used primarily for pre-splitting large trunks for the input of a wood chipper. In addition, they are also used in the crushing of whole trunks or the splitting of logs for drying and firewood.

With our high performance gear drives we are able to reach high torques of up to 20.000 Nm and a strong splitting power on the splitting cone.

With the special shape of our cones an effortless shredding can be achieved. The cone is built in two parts with a replaceable, high tempered tip. The gear drive unit can be equipped with a direct-connection or the quick-change adapter of your excavator or loader.

Depending on the carrier machine, the gear drive can be simply and easily attached and removed again. Furthermore it is possible to equip the gear drive instead of the cone splitter with an auger, stump drill, weed brush, adapter for screw anchor or a mixing drum. One attachment for several service functions!

No manual work - No diameter limit - No length limit - High capacity - little wear! - Practical proven system!



cone splitters from DORN-TEC - high performance splitting force



our planetary drives guarantee - high performance - little wear

changes reserved at any time



wood splitting from the excavator cab!
- No manual work - effective work reduction



stump removal drills

DORN-TEC INFO

- 1 drive
- many functions
- > wood splitter
- > earth drill
- > stump planer
- > mixing
- > sweeping



earth drills

cone wood splitters



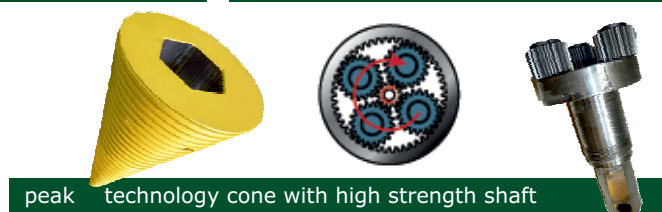
excavator splitters - proven for many years - high quality - very robust construction



cone splitter attached on an excavator



cone wood splitter - with attachment for front- or wheel loaders



peak technology cone with high strength shaft



cone wood splitter - mounted on a wood chipper

Type	Größe	Bagger	Drehmoment	Kegel	Ölmenge	Druck	Bohrer	Bohrer	Fräser
Type	Size	excavator	max. torque	cone	oil flow	pressure	drill	drill	stump
		Ton.	Nm	ø mm	l/min.	max. bar	ø mm	Kat.	ø mm
KS1	XS	0,8 - 2,5	1.500	160/180	20 - 45	205	100-400	S	---
KS2	S	1,5 - 3,0	2.500	160/180/200/250	27 - 65	240	100-500	S	---
KS3	M	2,5 - 5,0	3.500	200/250	40 - 85	240	100-750	S	250
KS5	ML	4,5 - 7,0	5.000	250	40 - 95	240	150-600	M	250
KS7	L	5,0 - 9,0	7.000	250/315	50 - 115	260	150-800	M	250
KS8	XL	6,0 - 10,0	8.300	250/315	70 - 150	240	150-900	M	350
KS12	XXL	10,0 - 17,0	12.000	315	70 - 150	240	150-1000	L	450
KS20	XXXL	13,0 - 20,0	20.000	315/400	80 - 170	240	150-1200	L	450

great advantages:

- > robust drive
- > strong gearbox
- > solid power transmission
- > quick tool change
- > high strength shaft
- > extreme high torque
- > oil bath lubrication
- > tried and tested equipment
- > long service life

changes reserved at any time

vertical log splitters HS

Vertical wood splitters between 8 and 30 t. Efficient firewood splitter for splitting of meter- and short-wood. DORN-TEC vertical wood splitters are convincing by her construction and the experiences from the practise:

- splitting height can be adjusted in seconds
- surface-hardened hydraulic piston
- brass guides for long durability
- long-lasting special painting
- 2-hand security handling
- for long and short wood logs
- extremely stolid frame
- lowerable cylinder without tools

- integrated oil tank in main frame - very good oil cooling
- chassis included 10-15to. / 17-21to. on request
- splitting cross on requested
- hydraulic winch on requested - also for retrofitting
- optional with SuperSpeed-System (SV) with extra fast return.



20,0 t splitter with lower control levers



21,0 t splitter with upper control levers



hydr. winch for all models



lowerable cylinder without tools



splitter with gasoline engine

changes reserved at any time

Typen	type	HB 80	100	112	114	115	117	120	121	130
Spalkkraft [t]	power	8	10	12	14	15	17	20	21	30
Zylinderhub [mm]	cylinder	560	1050	1050	1050	1050	1130	1150	1150	1050
Spaltlänge [mm]	splitting	600	1080	1150	1150	1150	1200	1250	1250	1150
Öltank [Liter]	oil tank	5	15	15	25	25	25	35	35	50
Leistung 400V [kW]	engine	1,8	3	3	4	4	4	5,5	5,5	---
Gewicht [kg]	weight	105	250	270	310	330	280	450	450	580
Option Zapfwellenantrieb	PTO	---	X	X	X	X	X	X	X	X
Option Schlepperhydraulik	hydr.	---	X	X	X	X	X	X	X	---
Option Kombi-Antrieb	combi	---	X	X	X	X	X	X	X	X
Option Benzin-Motor	benzin	---	X	X	X	X	---	X	X	---
Bedienhebel oben	lever up	---	---	X	---	X	X	---	X	X
Bedienhebel unten	lever down	X	X	---	X	---	---	X	---	---
Hydraulische Seilwinde	winch	---	optional	optional	optional	optional	optional	optional	optional	optional
Spaltkreuz	cross	optional	optional	optional	optional	optional	optional	optional	optional	optional
Absenkbarer Zylinder	lowerable cyl.	---	Serie	Serie	Serie	Serie	Serie	Serie	Serie	Serie
Gehärteter Hydraulikkolben	hardened cyl.	Serie	Serie	Serie	Serie	Serie	Serie	Serie	Serie	Serie
Fahrwerk	chassis	Serie	Serie	Serie	Serie	Serie	optional	optional	optional	optional
Langlebige Lackierung	painting	Serie	Serie	Serie	Serie	Serie	Serie	Serie	Serie	Serie
Spalthöhe einstellbar	adj. splitting	---	Serie	Serie	Serie	Serie	Serie	Serie	Serie	Serie
Tisch für Kurzholz	table	Serie	Serie	Serie	Serie	Serie	optional	Serie	Serie	Serie
2 Geschwindigkeiten	2 speed	---	X	X	X	X	X	X	X	---
Supergeschwindigkeit	super speed	---	optional	optional	optional	optional	---	optional	optional	Serie

horizontal log splitters HSL

Horizontal log splitters from 14 to 50 t. Powerful log splitter with high splitting power and different splitting length in horizontal type of construction. Our splitters are very robust and reliable due to the massive frame - for the effective production of long logs. The units can be combined with various types of drives: electric motor, gasoline engine, PTO or combined PTO and electric power. Optionally the machine can be equipped with loading arm, hydraulic splitting cross, bedside table, winch or a chassis. We offer also special models with 2,0m splitting length and longer.

An extensive range of accessories ensures that you always achieve the appropriate log splitter for your work. We have many years of experience with horizontal log splitters - benefit from it!



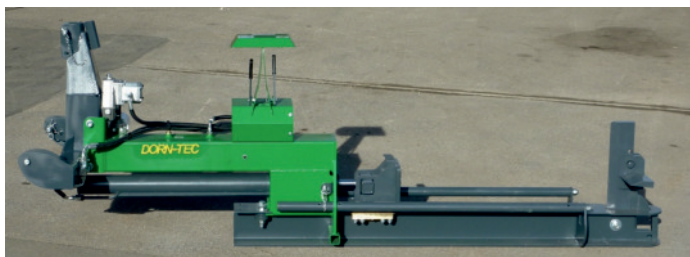
25 t-splitter with 1,3 or 2,0 m splitting length



20 t-splitter with hydr. loading arm + splitting cross



telescopic horizontal splitter in transport position



splitter with PTO, electric or combined drive



all splitters can be equipped with a crane or hydraulic winch

Type	Leistung	Zylinderhub	Spaltlänge	Gewicht	Ölmenge	Druck	Antrieb mit			
Type	power	cylinder	splitting	weight	oilflow	pressure	drive with			
	[Ton]	[mm]	[cm]	[kg]	[l/min.]	[bar]	CD	ET	CD+ET	MS
HSL 14	14	1060	120	380	25	200	Zapfwelle	Elektro	Kombi	Benzin
HSL 20	20	1150	120	480	40	200	Zapfwelle	Elektro	Kombi	Benzin
HSL 25	25	1150/2000	130/220	480/680	70	200	Zapfwelle	Elektro	Kombi	Benzin
HSL 30	30	1150	130	780	70	200	Zapfwelle	Elektro	Kombi	Benzin

Bigger splitters on demand!

changes reserved at any time



The DORN-TEC chippers are professional machines particularly suitable to quickly and cheaply reduce large volumes of wooden materials as logs, prunings, rejects from saw-mills, polling waste, wooden packages, etc..

Owing to a self-contained hydraulic system, which permits to adjust the inlet roll speed, the materials put into inlet mouth are directly pushed towards the chipping disc, evenly and with no power leakage; as a consequence, the operator can work under absolutely safe conditions and with minimum stress.

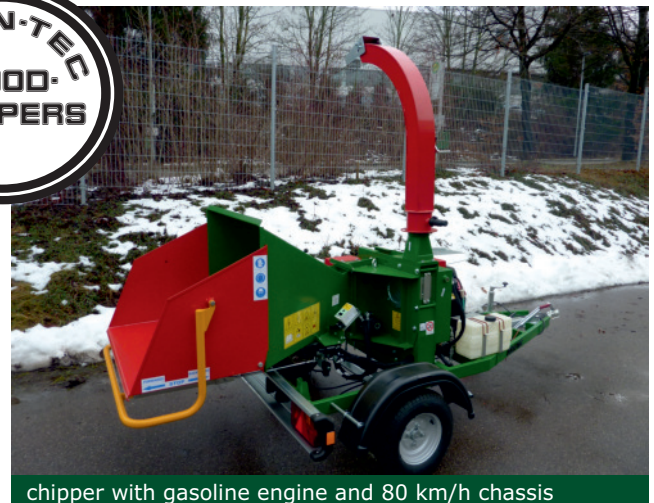
The wooden material is chopped into small pieces, different in length (chips), and the resulting product maybe successfully used either to originally protect cultivated surfaces or as fuel in the heating systems or several other applications. The main component of the chipping machine is the chipping disc which depending on the model, may have diameter ranging from 300 to 980mm., and thickness up to 50mm. It may be equipped with 2, 3 or 4 blades, capable to cut off logs with diameter from 20 to 320mm, with an hourly output from 3 to 70 cubicmeter/h.

The unloading conveyor, swinging around 360°, permits to discharge the chipped material at any position; the cutting chamber is provided with top opening, and so the operator can easily work to sharpen cutters or to change blades, when required.

The "No-Stress" computer system, supplied as an option, automatically gauges the infeeding material as a ratio of the available power and according to the nature of the stuff to be chipped.

The DORN-TEC chipping machines are available with PTO coupling to the tractor, 20 to 100HP, 3-point-linkage or low-speed towing truck. The power versions are equipped with gasoline or Diesel engines from 10 to 150 HP, low-speed towing truck or truck for towing at 80 km/h, type-approved for road traffic.

The high reliability coming from a careful selection of materials as well as from the design choices prompted by a pluriannual expertise and experience in the field, as well as the special care applied in pursuing the most suitable solution in a view of insuring highest safety to the operator, rightly allow the DORN-TEC chippers to style themselves with the mark of conformity with the ECC directives.



changes reserved at any time



wood chipper 1500



strong hydraulic variable-speed rollers with serial NO-stress control



DORN-TEC INFO

wood chipper
for the production
of wood chips
for heating systems

easy handling - maximum output



wood chipper 2200 forestry-version



wood chipper - in combination with a forestry crane

Holzhäcksler Typ	Type		800	1000	1200	1300	1500	2200	3200
Max. Durchlass	inlet	[mm]	120	150	130	150	180	250	350
Max. Hackdurchmesser	chipping	[mm]	80	100	120	130	150	220	320
Messerzahl	blades	[No.]	3	3	2	2	2	2	4
Erf. Schlepper	tractor	[PS]	20	20	20	30	40	80	100
Durchsatz pro Std.	output	[m³]	3-5	4-6	2-4	5-8	7-10	14-18	50-70
Abmessungen LxBxH	dimensions	[cm]	163x59x131	108x115x140	230x110x120	230x110x120	260x140x140	260x190x180	315x190x225
Gewicht	weight	[kg]	170	250	390	420	600	1100	2400
Auswurfhöhe	discharging	[mm]	700	1600	2350	2350	2750	3000	3600
Opt. Benzin-Motor	gasoline	opt.	X	X	X	X	X	---	---
Opt. Diesel-Motor	diesel	opt.	---	X	X	X	X	X	X
Opt. Elektro-Motor	electric	opt.	X	X	X	X	X	X	X
Opt. 6 km/h Fahrwerk	chassis	opt.	X	X	---	X	X	X	X
Opt. 80 km/h Fahrwerk	chassis	opt.	---	X	X	X	X	X	X
Opt. Raupenfahrwerk	crawler	opt.	---	X	---	X	X	X	X
Einzug	feeding		manual	manual	hydr.	hydr.	hydr.	hydr.	hydr.
Einzugswalzen	feeding rolls	No.	---	---	1	2	2	2	2
NO-Stress-Einheit	No-Stress		---	---	optional	Serie	Serie	Serie	Serie
Eigene Ölversorgung	pump+tank		---	---	Serie	Serie	Serie	Serie	Serie
Drehbarer Auswurf	output tube		---	Serie	Serie	Serie	Serie	Serie	Serie
Standard-Gelenkwelle	PTO shaft		Serie	Serie	Serie	Serie	Serie	Serie	Serie
Fahrwerk - Dreipunkt	PTO chassis		---	---	---	optional	Serie	Serie	Serie

changes reserved at any time

palett fork + hydraulic downholder

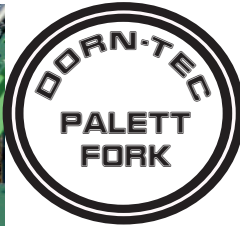
Universal palett forks for all industrial frontloaders with EURO-quick coupler or with special quick coupler for wheel-loaders and excavators. Palett fork carrier with 2 forged pallet fork tines single adjustable. Standard width of palett fork carrier 1200 mm. Norm of pallet fork carrier for 2500 kg capacity ISO FEM II.

Production is strictly „made in Germany“. The welding by certified welders guarantees high-quality and safe processing. High stability characterize the EuroForkCarrier. The whole construction is intensively tested. Multifunctional usage with our hydraulic logging grab quick mounting and demounting with clipped connection.

The best logging grab on the market. Extreme wide opening minimum clamp angle until the carrier plate. Optimized design, stable and reliable quality made by DORN-TEC.



min. closing angle for secure grabbing



hydr. downholder with big opening for firewood bundles

DORN-TEC INFO

We adjust the downholder to your fork carrier!



fork backs for mounting hay spears



logging grab for retrofitting

logging grab

Logging grab in very strong design for high performance in forestry. Practical sickle shaped shield for easy loading and handling wooden trunks. The logging shield can be equipped with none, one or two hydraulic grapples. With the hydraulic downholder all work can be done from the seat of the tractor.

Optional with 3-point-adaptor for front- or rear-hydraulic attachment.

standard equipment:

- sickle shaped shield
- for frontloaders with EURO-coupler
- lifting capacity ~ 2000kg
- with 1 double acting hydraulic cylinder per grapple
- grabable range ca. 330 to 1250mm
- width 1450mm



safe transport of logs with hydraulic logging grab



strong construction with EURO- or three point linkage

changes reserved at any time

hydraulic crane winch

Winch for fastening on crane boom for pulling logs and timber. Special designed winch for forestry applications with hydraulic locking and unlocking, which means that the oil motor does not have to be pulled when the wire will be pulled out.

details:

- winch with hydraulic drive
- handling via hydraulic control valve and/or remote control unit
- 35 m steel cable
- basic equipment with housing
- base frame for boom mounting
- average pulling force 1,6 t

configurations:

- with manual hydraulic control valve
- with electrohydraulic control valve and remote control

cable guidance with included deflecting roller!



easy fastening also for re-fitting

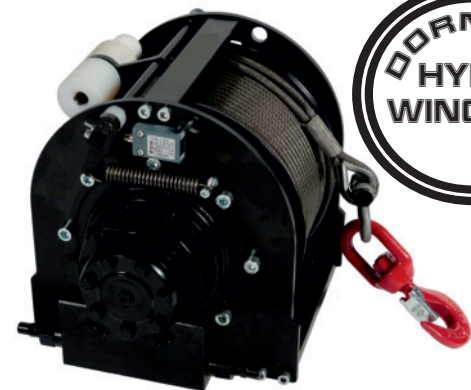


secure log pulling to the crane

hydraulic winches

Mountable hydraulic winches from 1000 to 10.000kg pulling force. We offer a wide range of hydraulic, electrical and PTO driven winches with reduction unit with worm wheel and irreversible worm-screw. All winches are manufactured with high resistance bronze crown and endless screw. With this kind of reduction unit, reverse motion is possible only pulling on the operating lever. This system allows to work safely since there is no need of a breaking unit. The winches can be easily mounted on platforms, trucks, jeeps, agriculture and forestry vehicles. The DORN-TEC winches come out in the DPH (hydraulic), DPM (mechanical) and DPE (electrical) versions. They are totally manufactured with high quality materials and in compliance with EEC laws.

In addition, we also provide compact winches with planetary-gear units for lifting equipment. Hydraulic winches with a load capacity of 600-7500 kg and various line speeds. High performance within the smallest possible volume - a size to suit every request!



compact winches with planetary gear units for lifting equipment



hydraulic winch with cable roll window



winches with reduction worm gearbox

changes reserved at any time

circular saws

High performance firewood saws in various designs and shapes depending on your taste and application needs. Designed as swinging table, sliding working table or band saws. Our circular

saws can be delivered with electric, tractor PTO or combined drive. The saw benches are equipped with a V-belt drive - so that you get a robust and reliable machine.



PRO saws with different drives



circular saws with swinging table



circular saw with gasoline engine and chassis

circular saw with conveyor belt

Easy and reasonable, but highly effective solution for your firewood cutting. Quick cutting and loading of big firewood amounts in one operation.

The circular-saw has a 700 mm blade, the conveyor belt is 250 or 400 mm wide and 4,0 or 5,0m long. The belt can be telescoped and folded for transport in less than 1 minute by one single person.

The machine can be fast and simply positioned for the respective application.

technical data:

- Model 700 with conveyor belt
 - saw drive via PTO or electric engine
 - belt drive via hydraulic or electric
 - 700 mm of steel- or Widia-steel blade
 - Max. cutting diameter 30 cm
 - own weight approx. 400 kg
 - rotation of saw blade 1500 rpm.
 - conveyor belt length 400/500 cm
- Telescopic and foldable for transport



circular saw with conveyor belt

conveyor belts

Mobile conveyor belts of DORN-TEC - the ideal supplement for your firewood cutting.

Available in the following versions:

- with electric gear engine 220 V / 1 ph.
- with electric gear engine 400 V / 3 ph.
- with hydraulic engine over tractor hydraulic
- with petrol engine
- with PTO drive

The belts can be delivered in different lengths and widths.

- 4,0 / 5,0 / 6,0 / 7,0 / 8,0 m length
- 250 / 300 / 400 / 600 mm band width
- equipped with or without chassis
- drive can be mounted below or on top
- special model with telescopic conveyor belt
- special model for wood chips



conveyor belts in different length and designs

changes reserved at any time

bundle device - with strong base frame

firewood meter bundle device - for quick and comfortable bundles of firewood.

Bundle device scope of supply:

- for 33-, 50- and 100-cm chimney wood
- secure stand by 4 parking feet, thereby also as a stationary device without tractor usable!
- with 3 point connection
- easy dumping of bundles with a stable hand lever
- compact dimensions
- stable bearing accordingly of the appearing forest!
- guaranteed one DIN Ster inside volume
- optional: with hydraulic dumping and/or EURO-connection
- special equipment - tensioning device



bundle device with three-point connection



bundle set

Bundle set tightening straps

Tightening strap in strong design. The fastening straps are absolutely long-lasting! Even heavy oaken and beech bundles can be suspended in the straps. In addition, the possibility exists to retighten the straps again.

Standard bundle set with 19-mm tension band (700 kg of breaking load), tension adjuster, clips and roller or **Professional bundle set** with 25-mm tension band (1000 kg of breaking load), tension adjuster, clips and roller



firewood meter bundle always a secure stand

hydraulic tractor plateaus

Hydraulic tractor plateau with extra high tipping force. Pending and removable rear plate steel platform gate. Allround machine for transport of sand, earth, soil, gravel, manure, straw balls, silage, wood chips, fire-wood, etc. You can use it to level earth, clear snow or for load and transport. Stable sturdy design with powder coating and HB wear bar. For single and double acting hydraulic. Optional equipment with top walls. Additional sizes on demand.



Extra robust and strong design with pending rear gate



equipment with extra strong hydraulic cylinder - single or double acting

Type	Gewicht	Kat.	Schlepper	Last	Abmessungen in mm.		
Type	weight	Kat.	tractor	load	dimensions in mm.		
	kg		PS/HP	KG	B	T	H
140/100	295	I/II	20-50	2000	1400	1000	400
160/100	315	I/II	40-60	2000	1600	1000	400
180/100	330	I/II	40-80	2000	1800	1000	400
180/125	380	I/II	60-100	3000	1800	1250	400
200/125	395	I/II	60-100	3000	2000	1250	400
220/125	415	I/II	60-120	3000	2200	1250	400

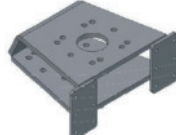
changes reserved at any time

grapple saw

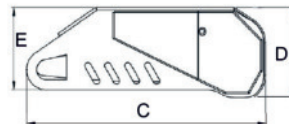
Accessories saw cassettes for timber grabs. Sawing and cutting with maximum performance. Robust, durable structure - easy to mount solution for large and small timber grapples. Used as a gripping saw for fast cutting and sorting or as a felling head in a fixed attachment on an excavator or telescopic loader. The optimum solution as a complete unit or retrofit kit for your timber grab. Optionally available standard adapters for grabs.

Automatical saw cassettes SK

- compact design / integrated lubrication tank
- high quality harvester sword and chain
- different cutting lengths with good cutting performance
- adjustable / different adapters
- sawing of logs up to 75cm in diameter
- adaptable to all grabs



saw cassette for timber grabs



grapple saw for felling works



Suitable solutions for large and small grabs

Typ	Schnitt	Gewicht	Druck	Ölmenge	Abmessungen in mm.		
Type	cutting	weight	pressure	oil flow	dimensions in mm.		
	Ø	kg	MAX. BAR	l/min.	C	D	E
SK 400	400	45	250	25 - 60	805	360	330
SK 500	500	55	250	50 - 100	950	360	330
SK 750	750	75	320	80 - 150	1150	365	350

wood splitting tongs

Wood splitting tongs - are used for splitting large trunks for the feeding of a wood chipper. In addition, they are also used in all harvest and processing methods of strong wood. Pre-splitting of thick trunks improve the natural drying process. Splitting tongs can also be used as a gripper. Through an

extremely large hydraulic cylinders and the special shape of the claws effortless shredding is possible.

We offer different sizes depending on carrier unit.
SPZ 600 / 800 / 950



splitting - overhead mounting



wood splitting tong for cranes and excavators in usage



wood splitter - excavator application

special forestry equipment

Detailed brochures of the equipment can be order from DORN-TEC on demand.



tree shear with rotation



hydraulic hedge clippers



forestry mulchers for tractor mounting



shovel for wheel-, front- and tele-loader



skidding grabs and tongs



general purpose mulchers - various usage



earth drills for three-point application



winch with hydraulic drive



pellet press



grading blades for three-point attachment



drum saw / automatic saw machines



firewood processors

changes reserved at any time

single-axle forestry trailers RW 60/80

The firewood trailer RW with log loader are intended as a universal timber trailer. The robust and compact design as a low-loading trailer have a very low center of gravity. With the closed wooden floor and the massive round tubular stakes, the trailer is suitable for the transport of short and long logs, trunks, rest pieces and meter pieces. The single-axle trailers are extremely agile for the use on wood yards and forestry tracks and can also be operated with smaller tractors.

Our trailers are proven in practice for a long time:

- very stable double-tube frame
- massive quality axes
- reinforced repluggable pipe stakes
- rotatable, curved stakes
- side and rear-side stake pockets
- overrun brake with automatic revers (RW60 / 80) or upon request with hydraulic or pneumatic brake system
- functional tires and wheel chocks
- solid front grid of square tubes
- strong wheel guard front and sides
- lighting fully assembled
- integrated lashing eyelets for securing straps
- water resistant base with plywood
- equipment with various cranes possible



single-axle firewood trailer RW60 [6,0to] with crane KCF3 - reach 4,8 m



single-axle forestry trailer Rw80 [8,0to.] with crane 650 - telescopic arm and max. reach 6,9 m

DORN-TEC Typ	Type	RW40	RW60	RW80
Gesamtgewicht	loading	4000 kg	6000 kg	8000 kg
Ladefläche-Länge	length	3200 mm	3200 mm	4000 mm
Ladefläche-Breite	width	1100 mm	1100 mm	1100 mm
Gesamtlänge	length	5300 mm	5300 mm	6050 mm
Gesamtbreite	width	1800 mm	1800 mm	1950 mm
Bereifung	tires	11,5/80-15,3	11,5/80-15,3	400/60-15,5
Eigengewicht	weight	900 kg	950 kg	1150 kg
Max Kran Hub	lifting	48 kNm	48 kNm	48 kNm
Rungenpaare	stakes	4 Paare	4 Paare	4 Paare
Empf. Forstkran	crane	KCF 2/3	KCF 3 / 495	495/530/650

changes reserved at any time



robust, practical construction

single-axle forestry trailers RW 60/80

Universal firewood-trailer RW with loader for long logs and fixed lengths. The standard timber trailers for the most firewood producers and forest enterprises in Germany. Removable cranes with A-frame for three-point and trailer application.

log loader advantages in detail:

- the cranes are proved for many years
- removable log loader
- three-point and trailer operation
- strong 360° slewing
- EURO-cross-lever control
- only 1 hydraulic line with open return required or separate oil supply with pump + tank
- quality TopGrip timber grab
- hydraulic unlimited rotator
- hydraulic support with internally cylinders
- tempered steels give our cranes robustness, reliability and lightness



easy handling / enormous movability / practical construction



strong timber trailers with an optimal price-performance



universal firewood single-axle trailer with German TÜV certification and road permission

changes reserved at any time

Crane Forest 495/530/650

Max. reach 5.4 m / 5.7 m / 6.9 m, 1.4 m telescope at 650s crane, 360° four-cylinder slewing with high torque, telescopic hydraulic support, TopGrip M timber grab, unlimited rotating head, Euro-cross-lever control, cylinder protection, 39 kNm lifting capacity - 500 kg payload at 5.0 m!

A-frame for three-point and trailer application

DORN-TEC cranes are long-time proven and field tested. High quality tempered steels provide enormous robustness. Outstanding details like a cylinder protection, internal support legs- and telescopic-cylinders, TopGrip timber grabs, quality rotator, brass bearing on crane column and a professional EURO crane control system make the log loaders especially valuable. Therefore, the standard forestry cranes fit for the most firewood producers and forestry users in Europe.



three-point operation / high lifting capacity



log loader with winch



crane with wood chipper



three-point operation with control platform and control valve holder

changes reserved at any time



crane with horizontal splitter



log loader for universal usage

forestry cranes 495 / 530 / 650

The DORN-TEC crane series „forest“ was specially designed for the needs of the forestry industry. A great working distance with an optimized lifting capacity on minimum weight. Due to the modular design all cranes offer a multi-purpose usage.

The cranes can be easily assembled on a trailer or other machine or connected to the three-point of a tractor.

All DORN-TEC forest cranes are equipped with strong slewing cylinder for a powerful slewing torque. The cranes are flanged on a base frame with 2 hydraulic support legs. In standard configuration we have mounted on all models EURO 2-lever cross-control-valves.

Other equipments can be assembled on demand.



easily loading to front guard



forestry crane in transport position over the cabine



universal forestry log loaders for tractor- and trailer application



top price-performance ratio



DORN-TEC Typ	Type	495	530	650
Armlänge	arm	5,00 m	5,30 m	6,50 m
Reichweite	reach	5,40 m	5,70 m	6,90 m
Teleskop	telescopic	---	---	1,40 m
Brutto Hub max.	lifting	39 kNm	39 kNm	39 kNm
Hub bei 4m (ohne Greifer)	lift at 4m	750 kg	750 kg	750 kg
Schwenkmoment	slewing	7 kNm	12 kNm	12 kNm
Schwenkwinkel	rotation	360° / 2 Zyl.	360° / 4 Zyl.	360° / 4 Zyl.
Rundholzgreifer	grab	0,18 m²	0,18 m²	0,18 m²
Rotator max Last	rotator	30 kN	30 kN	30 kN
Steuerventil Standard	valve	HC 5/7 XY	HC 5/7 XY	HC 6/8 XY
Abstützung	stabilizer	teleskop-hydr.	teleskop-hydr.	teleskop-hydr.
Arbeitsdruck	pressure	180 bar	180 bar	180 bar
Empf. Pumpenleistung	oilflow	25-40 l/min	25-40 l/min	25-40 l/min
Gesamtgewicht	weight	800 kg	850 kg	1000 kg
Empf. Rungenwagen	trailer	RW 40/60/80	RW 60/80	RW 60/80
Empf. Rückewagen	trailer	RF 70/90	RF 70/90/100	RF 90/100/100D

changes reserved at any time



quality forestry trailers from DORN-TEC 90/530 90/650 or 100/530 100/650

plattform with control valve holder



powerful loading cranes with high slewing torque



heavy loading area - solid construction



robust axles - protected brake lines

changes reserved at any time



good off-road capability

extremely large boogie pendulum

DORN-TEC offers a wide range of forestry trailers and forestry cranes from the first-time user up to the professional machine. First class shaping as well as a simple and strong construction, combined with powerful loading cranes, realize a top price-performance ratio.

Right from the start all trailers are designed for the special requirements of the challenging forest environments: bogie axles for great clearance height in impassable grounds, drawbar steering for high agility in tight spaces. All used cranes are

proved for many years. The cylinders of the support legs are protected, strong angle joints enable excellent working geometry. The trailers can be equipped with different control valves and braking systems (hydraulic-, pneumatic- or rampbrake). All machines are very well suited for the transportation of timber from the forest to road side.

Consult us, we are sure that we have the right trailer for you!



entry-model forestry 70/495 with standard drawbar steering



strong and practical forestry trailers



forestry trailer with central frame under forest conditions - high quality steel ensures maximum stability

DORN-TEC Typ	Type	RF 70	RF 90	RF 100	RF 100D	RF 140
Ladekapazität	loading	7000 kg	9000 kg	10000 kg	11000 kg	14000 kg
Achsen	axles	60x60-6	70x70-6	70x70-6	70x70-6	80x80-8
Ladequerschnitt	area	1,8 m²	2,1 m²	2,1 m²	2,4 m²	2,7 m²
Rahmen	frame	1x160x160x8	1x160x160x8	1x160x160x8	2x200x100x8	1x200x200x8
Ladefläche Länge	length	3600 mm	3600 mm	3600 mm	4000 mm	3850-5050 mm
Gesamtlänge	length	5600 mm	5600 mm	5600 mm	6050 mm	6050-7250 mm
Gesamtbreite	width	1940 mm	2100 mm	2100 mm	2100 mm	2400 mm
Bereifung	tires	11,5/80-15,3	400/60-15,5	400/60-15,5	400/60-15,5	500/50-17
Schwenkzylinder	cylinder	1	1	1	1	2
Schwenkwinkel	angle	±40°	±40°	±40°	±40°	±40°
Eigengewicht	weight	950 kg	1300 kg	1500 kg	1800 kg	2500 kg
Max Hubmoment	lifting	48 kNm	48 kNm	48 kNm	62 kNm	90 kNm
Rungenpaare	stakes	4 Paare	4 Paare	4 Paare	4 Paare	4 Paare
Empf. Forstkran	crane	495	530/650	530/650	650	KCF 7/10/12



flexible equipment - flexible application

changes reserved at any time

forestry loaders KCF 1 / 2 / 3

DORN-TEC firewood loading cranes in extra lightweight and robust construction for small tractors and wood trailers. The flexible configuration enables an easy tractor coupling and trailer assembly. A well-priced solution which provides very great movability and wide range of applications.

Equipped with 360° slewing angle, timber grab, unlimited hydraulic rotator and a EURO cross-control-valve the loaders offers all what you need for timber and wood material handling.



Crane KCF 2 - the ideal firewood loader for small tractors and wood trailers



Crane KCF 3 - effective firewood loading on a trailer

L-crane for flange-, three-point- or trailer mounting

Type	Arm	Abmessungen in mm.				Hub	Drehung	Gewicht
Type	Arm	dimensions in mm.				lifting	slewing	weight
	L	B	C	A	kNm	kNm		KG
KCF 1L	3,3 m	1,9 m	1,4 m	2,2 m	12	3,5 / 7		300
KCF 1	3,3 m	1,9 m	1,4 m	2,2 m	15	4 / 8		350
KCF 2	3,8 m	2,2 m	1,6 m	2,4 m	20	5 / 10		400
KCF 3	4,5 m	2,8 m	1,7 m	2,4 m	25	6 / 12		550

changes reserved at any time



light weight forestry loader - for tractor and trailer application

forestry loaders KCF 4 / 5 / 7 / 10 / 12

DORN-TEC forestry loaders for tractor-coupling and/or trailer mounting. With a flexible construction and several equipment options all cranes can be designed for individual needs of our customers. DORN-TEC forestry cranes are robust working machines for the daily usage in communal and forestry field. The main point of our loaders is the strong slewing gear box and the usage of high quality tempered steels for the arms and column.

All our loaders are also available in flange version. On demand we can integrate a tank with oilpump for an independent oil circle or an oil cooling system. Our products are based on years of experience - they satisfy due to their practicality, robustness and reliability. Great freedom of movement through outstanding crane kinematics.



KCF - forestry loader in transport position over the cabine



three-point attachment with seat on column



best possible mobility



trailer attachment



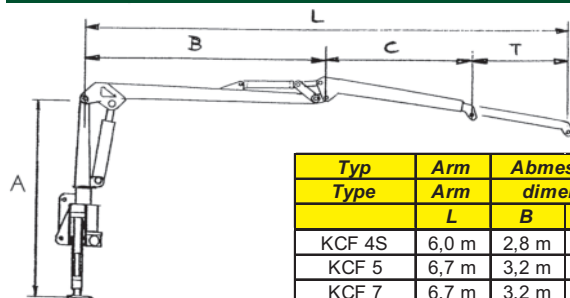
long reach with telescopic extension



KCF crane - in communal usage



strong support legs for secure three-point work



dimensional drawing

Typ	Arm	Abmessungen in m.				Langer	Reichweite	Hubkraft	Gewicht	Drehung	Drehung	Druck	Ölfluss
Type	Arm	dimensions in m.				long	max. reach	lifting	weight	slewing	rotation	pressure	oilflow
	L	B	C	T	arm [L]			kNm	KG	kNm		bar	l/min.
KCF 4S	6,0 m	2,8 m	2,1 m	1,2 m	---		6,4 m	39	950	7 / 14	360°	180	20-40
KCF 5	6,7 m	3,2 m	2,1 m	1,4 m	---		7,1 m	46	1000	16	360°	180	20-40
KCF 7	6,7 m	3,2 m	2,1 m	1,4 m	7,2 / 8,2 m		7,1 m	55	1300	18	360°	180	30-50
KCF 10	6,7 m	3,2 m	2,1 m	1,4 m	7,2 / 8,2 m		7,1 m	62	1500	20	360°	180	30-60
KCF 12	6,7 m	3,2 m	2,1 m	1,4 m	7,2 / 8,2 m		7,1 m	72	1600	24	360°	180	40-70

changes reserved at any time

dumper - with forestry crane

Combination vehicles with crane.

Available from 3 to 18.0 t total weight. Single-axle [EDK] or tandem-axle [TDK] three-way dumper with frame extension for the assembly of a hydraulic crane.

Strong hollow pipe support frame with mounting plate for crane assembly. Side board and rear walls oscillating and hinged. Sturdy steel side walls with removable corner stakes.

3- or 4-step tilt cylinders enable a three-side tilt. Rear underride protection with integrated lighting system. Low height and low center of gravity for safe transport.

Different braking systems and speed versions on special request. Universal crane equipment according to the need and use of the customer.



various crane possibilities available - also with foldable Z-crane



combination trailers for versatile usage



optional equipment - with extension sides



crane control with seat on column or operating platform



three-way tilt function for universal application



tilt-platform with optional construction for stakes



changes reserved at any time



versatility usage - versatile selection



various bridge sizes and equipment on demand



5,0 to. dumper with 495 forestry crane



different braking systems and tires



single-axle three-side dumper in forestry operation

**Ask DORN-TEC,
we have guaranteed
the right vehicle
for your needs!**

Typ	Tonnage	Gewicht	Brücke	Wand	Spur	Bereifung	Kippzyl.	Kran
Type	load cap.	weight	platform	side	track	tires	tilt cyl.	crane
	to.	kg	m	mm	mm	STD	No.	rec.
EDK 40	4,0	980	3,0 x 1,6	400	1350	10,0/75-15	3	KCF 2/3
EDK 60	6,0	1100	3,5 x 1,8	400	1500	11,5/80-15,3	3	495/650
EDK 60	6,0	1400	4,0 x 2,0	500	1600	11,5/80-15,3	4	495/650
EDK 70/80	7,0 / 8,0	1750	4,0 x 2,0	500	1600	355/60-R18	4	650
TDK 80	8,0	2000	4,0 x 2,0	500	1600	11,5/80-15,3	4	KCF 5/7
TDK 120	12,0	2350	4,5 x 2,2	500	1750	12,5/80-15,3	4	KCF 7/10
TDK 140	14,0	2500	4,5 x 2,2	500	1750	355/60-R18	4	KCF 10/12



changes reserved at any time

foldable forestry cranes

Forestry loaders with foldable arms from DORN-TEC for tractor connection and/or trailer assembly with optional integrated oil tank and flexible equipment. All models can be equipped with different accessories and control valves.

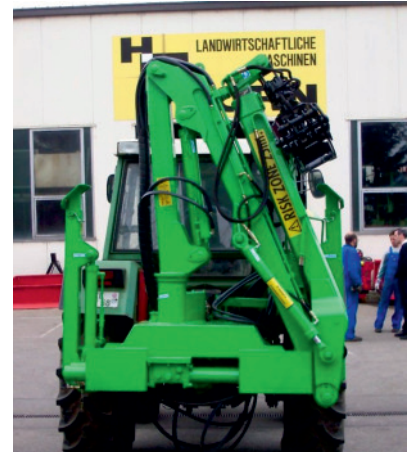
A-frame, flap-down or telescopic-hydraulic truck stabilizers. Made entirely from quality tempered steel ensuring they are robust and lightweight.



Z-crane with comfort control and seat



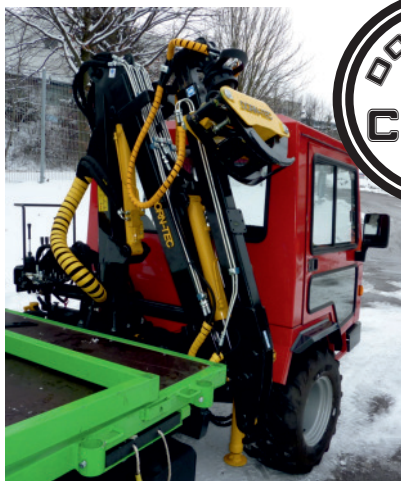
Z-crane for truck-, trailer- or tractor-assembly



three-point-connection



hydraulic truck stabilizers



truck- / transporter assembly



trailer assembly / Z-crane in forestry operation



flexible applications

Z-crane in flange-, three-point- or trailer-version, with various stabilizers and control systems

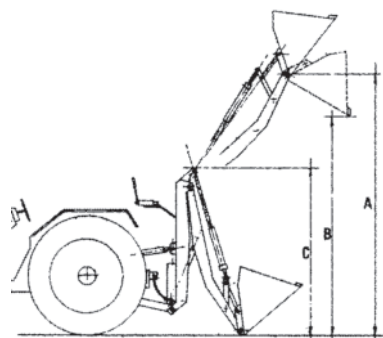
Typ	Armlänge	Reichweite	Lange Vers.	Hubkraft	Gewicht	Drehung	Drehung	Druck	Ölfluss
Type	arm length	max. reach	long vers.	lifting cap.	weight	slewing	rotation	pressure	oilflow
	L		arm [L]	kNm	KG	kNm		bar	l/min.
KCF 1R	3,5 m	3,8 m	---	15	400	4 / 8	360°	170	15-25
KCF 2R	3,9 m	4,2 m	---	20	450	5 / 10	360°	170	20-30
KCF 3R	4,2 m	4,5 m	---	25	600	6 / 12	360°	170	20-30
KCF 4R	4,4 m	4,8 m	5,5 m	35	800	7 / 14	360°	180	20-40
KCF 5R	5,1 m	5,5 m	5,6 m	46	1100	16	360°	180	20-40
KCF 7R	5,3 m	5,7 m	6,2 m	55	1300	18	360°	180	30-50
KCF 10R	6,2 m	6,6 m	6,6 / 7,2 m	62	1500	20	360°	180	30-60
KCF 12R	6,2 m	6,6 m	6,6 / 7,2 m	72	1800	24	360°	180	40-70

changes reserved at any time

Bigger loaders on demand!

rear loaders series P

Comprehensive series of rear loaders to be applied to the power lift of any farm tractor. Costing little, robust, and easy to use and couple. Numerous qualities make this series a viable alternative to front loaders: Being compact, they can be used in awkward, restricted spaces. The "P" - series rear loaders are suitable for moving and loading any product: earth, gravel, grain, flour, grapes, round bales, pallets, snow etc... They come with two hydraulic double-acting cylinders and self-levelling system.



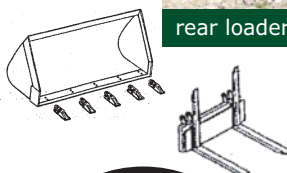
dimensional drawing



rear loader with bulk bucket



round bale loading with rear loader



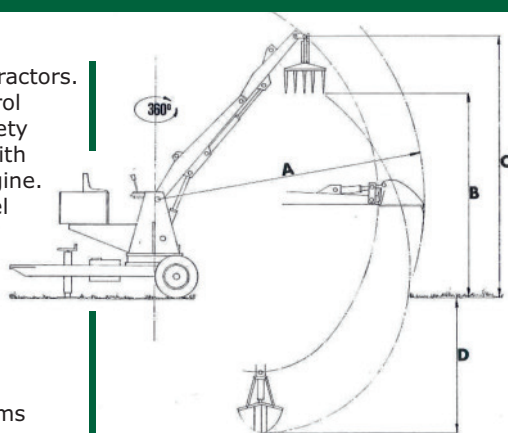
big height of stroke - flexible operation

Type	Gewicht weight	Hubkraft lifting cap.	Gabel fork	Schlepper tractor	Abmessungen in mm. dimensions in mm.		
	KG	KG	m ³	PS/HP	A	B	C
P 30	230	200	0,17	20-30	2200	1800	1500
P 40	315	300	0,25	40-60	2900	2500	1500
P 50	370	500	0,40	50-70	3000	2600	1600
P 60	400	550	0,45	60-80	3200	2800	1750
P 80	460	700	0,60	80-100	3200	2800	1750
P 100	600	800	0,70	100-130	3600	3200	2000

trailed loaders series CC

Series of loaders/excavators trailed by tractors. They feature universal joint pump, control distributor with relevant valves, and safety valves. On request, they can be fitted with an electric motor, or petrol or Diesel engine.

- rotation 360° continuous on fifth wheel
- stabilizers Mechanical: 2 or 4
- stabilizers Hydraulic: 2 or 4
- drawbar high or low
- first arm: straight or bent
- second arm: fixed or telescopic
- accessories forks, buckets, grabs etc.



Optional: stationary loader with 3 arms

Type	Gewicht weight	Hubkraft lifting cap.	Drehung rotation	Kranz slewing	Abmessungen in mm. dimensions in mm.			
	KG	KG		mm	A	B	C	D
CC 350	1300	350	360°	700	4350	3600	4500	2100
CC 450	1500	450	360°	700	4700	4200	5100	2200
CC 500	2200	500	360°	700	5000	4700	5700	2500
CC 750	2600	750	360°	880	5600	5300	6300	2700
CC 1000	3000	1000	360°	1000	6100	5800	6800	3000



CC trailed loader with hydr. stabilizers

changes reserved at any time

universal loader for tractor coupling

Our universal loader series CLN offer versatility.
The model selection is based on your tractor model and the intended use.

You can use it for the following applications:

- forestry work with timber grab or use as a skidding crane
- earthworks including depth-, trench-, grading- bucket or clamshell
- planting with auger and clamshell

Advantages:

- slewing rotation with double bearing
- own oil circle with oil pump and tank
- center of gravity close to the tractor
- optional with control seat on column
- earthworks and woodwork
- use of high-quality special steels



CLN 500 with drilling gear drive and splitting cone



timber handling with seat on column and comfort control



CLN-loader with wheels for skidding application



CLN 500 with bented arm in transport position

changes reserved at any time



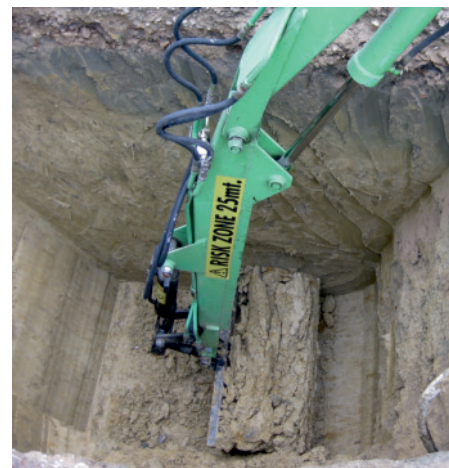
CLN 350 in progress at forestry work



CLN loader in skidding application at the forest



bucket in operation



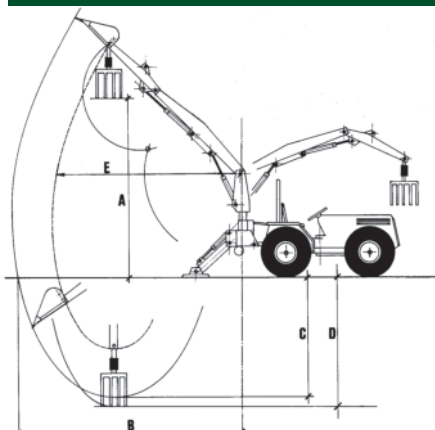
excavator with ditching bucket



earth moving with CLN excavator



manure loading with CLN loader / equipped with height adjustable towing attachment



dimensional drawing

Typ Type	Gewicht weight	Druck pressure	Ölmenge oilflow	Drehung rotation	Abmessungen in mm. dimensions in mm.		
	KG	BAR	l/min.		A	B	C
CLN 100	320	170	20-30	180/360°	2300	3400	1800
CLN 150	540	170	20-30	180/360°	2900	3750	2100
CLN 250	680	170	20-30	180/360°	2900	3750	2100
CLN 350	800	170	20-30	180/360°	3300	4000	2200
CLN 500	1000	170	30-40	180/360°	3800	4500	2300
CLN 700	1200	170	30-50	180/360°	4500	4800	2600

changes reserved at any time

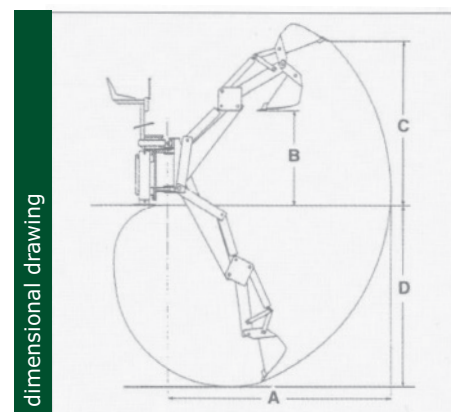
The range includes a comprehensive series of backhoes for farm tractors, from 10 to 120 HP, and for backhoe loaders and skid steer loaders for industrial use. All models come with removing frame complete with mechanical or hydraulic locking; control distributor with relevant valves (control stick available on request); independent hydraulic feet and seat. Arms are made from special steel ensuring

our excavators are robust, reliable and lightweight.

- swing gear: 180° rotation with 2 cylinder
- deep-, ditching-, tiltable- und trapeze-bucket
- accessories: forks, auger worms, clamshells, etc.
- hydraulic control valves: four-way-, six-way-, EHC
- mounting: via three-point or mounting plate
- drive: via tractor hydraulic or oilpump+tank



Typ	Gewicht	Reißkraft	Druck	Ölfluss	Drehung	Rahmen	Abmessungen in mm.			
Type	weight	tear force	pressure	oilflow	rotation	frame	dimensions in mm.			
	KG	KG	BAR	l/min.		mm	A	B	C	D
NA 1000	150	400	130	6	140°	800	1550	1100	1600	1000
NA 1200	240	600	160	8	180°	800	1750	1300	1700	1200
NA 1500	300	1000	160	10	180°	800	2350	1350	1800	1600
NA 1700	390	1000	160	10	180°	1000	2800	1700	2500	2000
NA 1900	420	1200	160	14	180°	1000	2450	1300	1900	1550
NA 1800LC	450	1200	160	14	180°	1300	3100	1900	2700	2300
NA 2200LC	600	1600	160	18	180°	1300	3300	2100	3100	2500
NA 2200LN	630	1600	160	18	180°	1300	3450	2300	3300	2800



Typ	Gewicht	Reißkraft	Druck	Ölmenge	Drehung	Rahmen	Abmessungen in mm.			
Type	weight	tear force	pressure	oilflow	rotation	frame	dimensions in mm.			
	KG	KG	BAR	l/min.		mm	A	B	C	D
NA 2300	550	1600	160	18	180°	1300	2750	1600	2400	2000
NA 2450	660	1800	160	18	180°	1500	3000	2000	3000	2300
NA 2600	650	2000	160	22	180°	1500	3400	2100	3000	2700
NA 2800	750	2400	160	32	180°	1500	3400	1900	2900	2400
NA 3000	780	2600	160	32	180°	1500	3600	2100	3100	2700
NA 3200	850	2800	160	32	180°	1500	3900	2400	3500	3000
NA 3500	1100	3200	160	40	180°	1700	4000	2500	3600	3100
NA 3600	1350	4200	160	50	180°	1700	4400	2900	4000	3400
NA 3700	1500	5000	160	50	180°	1700	4700	3200	4300	3700

changes reserved at any time

combi backhoe loader

DORN-TEC's combi firewood backhoe loader. Wide revolving hydraulic flap-down stabilizers offer a secure stability even when it is used on small tractors. Seat on column for comfortable operation. Additional hydraulic circuit with 4 lines for rotator application.

Flexible usage: with timber grab, manure fork or clamshell, trench-, depth-, trapezoidal- and tilt- bucket.

Easy mounting on every tractor three-point.

Robust simple rotation with 2 hydraulic cylinders.

An integrated tank offers the possibility of an independent oil circle.

EURO-cross lever control for easy and safe operation. The strong load capacity of 400 kg work load makes the CLNA loader to a perfect solution for all firewood and forestry companies.



CLNA loader with manure fork



backhoe with comfortable handling



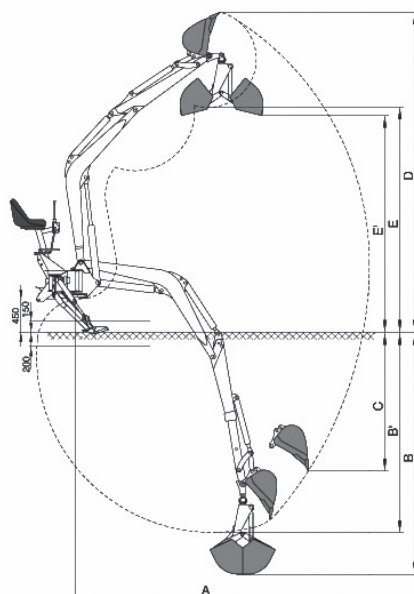
earth moving with bucket



combi backhoe loader for digging and loading with revolving hydraulic flap-down stabilizers, seat on column and EURO-control valve



combi-excavator for universal usage



dimensional drawing



high lifting capacity

Technische Daten / technical data			CLNA
A mm	Reichweite	work distance	4000
B/B' mm	Grabtiefe	digging depth	1950/2595
C mm	Arbeitstiefe	work depth	1600
D mm	Grabhöhe	digging height	4100
E/E' mm	Ausschütthöhe	useful unloading	3110/2740
	Schwenkbereich	rotation	180°
kg	Loßbrechkraft	breaking force	1690
kg	Reißkraft	digging force	1040
kg	Hubkraft	load cap. at end	450
bar	Arbeitsdruck	working pressure	175
l/min.	Ölfluss	oil flow	30
kg	Eigengewicht	weight	600

changes reserved at any time

generating sets for tractor coupling IP44

The mobile power source for agriculture and forestry.
We deliver alternators with 3000 rpm and 1500 rpm depending on the application. Voltage and frequency depends on the country of usage.

performance

The generating sets deliver 400/230V nominal voltage at 50Hz frequency. The generators can be equipped with electronic regulator and/or over- and under-voltage relay.

gearbox

The power is transmitted through a cardan joint (not included in our supply) between the power take-off and the overgear mounted on the generator. The necessary PTO rotation varies between 440 and 520 rpm.

manual panel

The manual panel is fixed on the generating set completed with the following instruments: automatic differential circuit breaker, voltmeter, 2 sockets in accordance with EEC regulation or terminal box. Upon request: ammeter, frequencymeter, hourmeter, automatic voltage regulator.

documentation

Manual and instruction book for installation, operation and trouble-shooting.

generator

Industrial version: self-exciting, self-regulating, brushless synchron compound generator with life-time lubrication bearings. Short-circuit-proof and overload protected.

main frame

These generating sets are supplied completed with a 3 points base for an easy coupling with every type of tractor. Gearbox with oil bath lubrication.

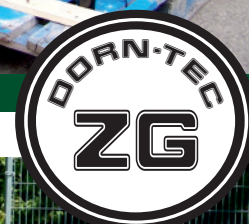
control panel

The control panel is equipped with:

- 2-pole automatic circuit breaker 230V
- 4-pole automatic circuit breaker 400/230V
- differential circuit breaker
- CEE 3-phase socket IP44, 5-pole



PTO generating sets - wide selection



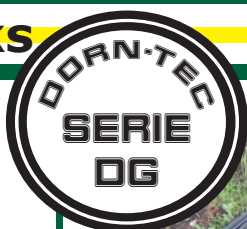
main frame with three-point connection for tractor coupling

Modell	Leistung		Drehzahl	Spannung	Traktor	Zapfwelle	Abmessungen			Gewicht
Type	Power		rpm	voltage	HP tractor	rpm entry	dimensions			weight
	KVA	KW	U/min.	Volt	PS	U/min.	L	B	H	kg
ZG 10 TR	10	8	3000	400/230	20	440	900	850	800	95
ZG 16 TR	16	13	3000	400/230	30	440	900	850	800	125
ZG 22 TR	22	18	3000	400/230	45	440	900	850	800	140
ZG 27 TR	27	22	3000	400/230	50	440	950	950	900	150
ZG 30 TR	30	24	3000	400/230	60	440	950	950	900	210
ZG 40 TR	40	32	3000	400/230	75	440	950	950	900	240
ZG 10 TRL	10	8	1500	400/230	20	430	900	850	800	135
ZG 15 TRL	15	12	1500	400/230	30	430	900	850	800	150
ZG 20 TRL	20	16	1500	400/230	45	430	900	850	800	205
ZG 25 TRL	25	20	1500	400/230	50	430	950	950	900	230
ZG 30 TRL	30	24	1500	400/230	60	430	950	950	900	240
ZG 42 TRL*	42	34	1500	400/230	80	400	950	1020	1020	320
ZG 50 TRL*	50	40	1500	400/230	100	430	950	1020	1020	410
ZG 60 TRL*	60	48	1500	400/230	120	400	950	1020	1020	430
ZG 75 TRL*	75	60	1500	400/230	140	400	950	1020	1020	450
ZG 85 TRL*	85	68	1500	400/230	150	400	950	1020	1020	460

* serial configuration with electronic regulator. Designed to automatically maintain a constant voltage level for sensitive appliance, e.g. computers, circuit boards on demand for all other models available / on demand in combination with an over- and undervoltage relay

changes reserved at any time

manure forks



Manure forks Series HM/H/HI
With one horizontal cylinder
for manure, gras, silage, hay,
straw, brushwood, etc.

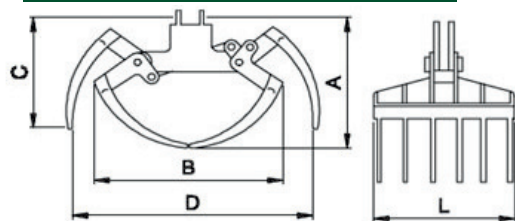
- HM for mini excavator
- H standard version
- HI industrial version
also for branches, waste, scrap
- Optional: with vertical cylinder
- V with vertical cylinder



forks in different sizes with horizontal cylinder / further models on demand



industrial version DG HI



dimensional drawing

Typ	Zähne	Gewicht	Druck	Abmessungen in mm.				
Type	teeth	weight	pressure	dimensions in mm.				
	No.	KG	MAX. BAR	A	B	C	D	L
DG HM8	8	65	200	600	800	550	1000	400
DG HM10	10	63	200	600	800	550	1000	550
DG HM12	12	80	200	600	800	550	1000	630
DG H8	8	125	200	780	980	580	1300	500
DG H10	10	145	200	780	980	580	1300	650
DG H12	12	165	200	780	980	580	1300	800
DG H14	14	185	200	780	980	580	1300	950
DG H16	16	205	200	780	980	580	1300	1100
DG HI16	16	400	200	950	1050	750	1750	1200
DG HI20	20	550	250	950	1150	750	1800	1400

TopStar exchanging system

Fork and clamshell bucket combined in one attachment.
Easy and quick exchange of peelings without any difficulties a low-priced solution from DORN-TEC:

- One main frame with semivertical cylinder
- two grabs: clamshell buckets for loose sand, earth, etc. / fork for manure, grass, hay, straw, etc.



exchanging system - fork or clamshell



TopStar fork equipment



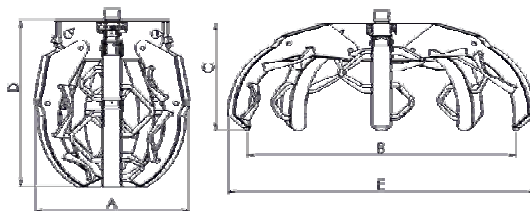
TopStar clamshell equipment

Typ	Zähne	Gewicht	Druck	Abmessungen in mm.					
Type	teeth	weight	pressure	dimensions in mm.					
	No.	KG	MAX. BAR	A	B	C	D	L-Dung	L-Schale
TopStar S	4+4	105	200	920	920	850	800	700	600
TopStar M	5+5	120	200	920	920	850	800	930	600
TopStar L	5+5	200	200	1250	1020	950	1300	915	720

changes reserved at any time

wood polyp PL - for firewood

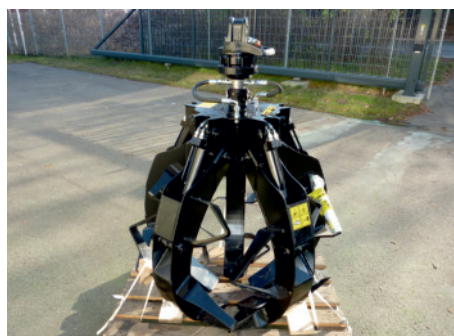
The firewood grapples PL are suitable for the loading of chimney wood, short wood, waste and firewood. The grippers are with 5 arms and 5 cylinders equipped and can be attached on forestry cranes, excavators and other machines.



dimensional drawing



strong design with 5 cylinder



polyp grab for effective firewood handling

Type	Inhalt	Gewicht	Druck	Arme	Abmessungen in mm.				
Type	capacity	weight	pressure	teeth	dimensions in mm.				
	LT	KG	max. bar	No.	A	B	C	D	E
PLS	200	140	200	5	780	1420	560	870	1570
PLL	300	260	200	5	980	1750	690	1100	1950
PLXL	400	330	250	5	1150	2200	745	1260	2400

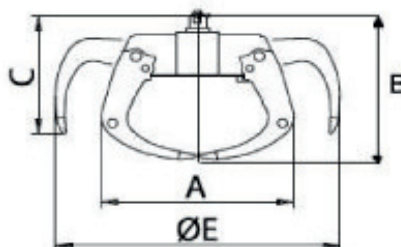
orange peel grabs MG - for waste material handling

Orange peel grapples MG from DORN-TEC with hydraulic operation for loading metal, waste, scrap, bulk solids etc.

For truck cranes with 4/5/6 cylinders/arms.
Bigger versions available on demand.

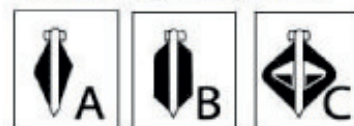


polyp grabs for effective material handling

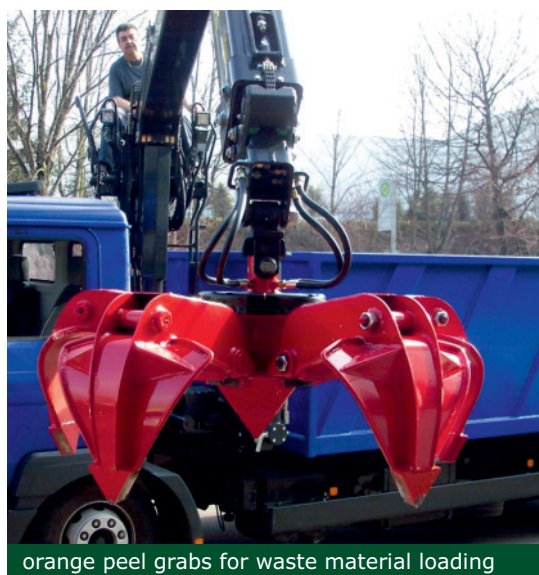


dimensional drawing

*Versione disponibile
*Version disponible avec
*Model available with
*Ausführung verfügbar mit



Type	Inhalt	Gewicht	Druck	Arme	Abmessungen in mm.				
Type	capacity	weight	pressure	teeth	dimensions in mm.				
	LT	KG	BAR	No.	A	B	C	D	E
MG/3-60	60	70	200	3	750	525	390	1015	
MG/4-80	80	85	200	4	780	510	390	1050	
MG/4-95	100	105	250	4	730	650	480	1230	
MG/5-95	100	118	250	5	730	650	480	1230	
MG/4-12	120	160	250	4	820	650	450	1300	
MG/4-18	180	170	250	4	890	700	510	1350	
MG/4-25	250	250	250	4	1020	770	600	1480	
MG/4-28	280	290	250	4	1020	900	650	1640	
MG/4-35	350	360	250	4	1200	960	780	1840	
MG/4-50	500	385	250	4	1300	1070	830	2070	
MG/5-12	120	170	250	5	820	650	450	1300	
MG/5-18	180	190	250	5	890	700	510	1350	
MG/5-25	250	270	250	5	1020	770	600	1480	
MG/5-35	350	410	250	5	1200	960	780	1840	
MG/5-50	500	440	250	5	1300	1070	830	2070	
MG/6-28	280	370	250	6	1110	790	670	1610	
MG/6-40	400	390	250	6	1130	920	720	1820	



orange peel grabs for waste material loading

changes reserved at any time

clamshell bucket with vertical cylinder

Clamshell bucket (ZG) Series V with vertical cylinder.
Light clamshell for loading and excavating with one vertical Cylinder.



diff. peeling width - for diff. application

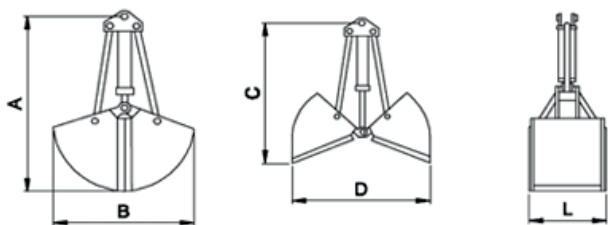


Mini version ZG VM



hydraulic bucket ZG V400 small peelings with big volume

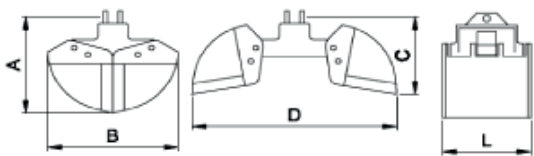
Type	Inhalt Capacity	Gewicht weight	Druck pressure	Abmessungen in mm. dimensions in mm.				
	LT	KG	MAX. BAR	A	B	C	D	L
ZG VM30	30	61	200	770	600	700	700	300
ZG VM40	40	63	200	770	600	700	700	400
ZG VM50	50	65	200	770	600	700	700	500
ZG V30	100	135	200	1100	850	950	1050	330
ZG V40	125	145	200	1100	850	950	1050	430
ZG V60	175	165	200	1100	850	950	1050	630
ZG V80	225	185	200	1100	850	950	1050	830
ZG V100	275	205	200	1100	850	950	1050	1030
ZG V400	155	185	200	1280	1030	1070	1250	430
ZG V600	220	210	200	1280	1030	1070	1250	630
ZG V800	310	235	200	1280	1030	1070	1250	830
ZG V1000	400	260	200	1280	1030	1070	1250	1030
ZG V1200	500	285	200	1280	1030	1070	1250	1230



dimensional drawing

clamshell bucket with horizontal cylinder

Clamshell bucket (ZG) Series O with horizontal cylinder.
Clamshell with horizontal cylinder for handling different material.



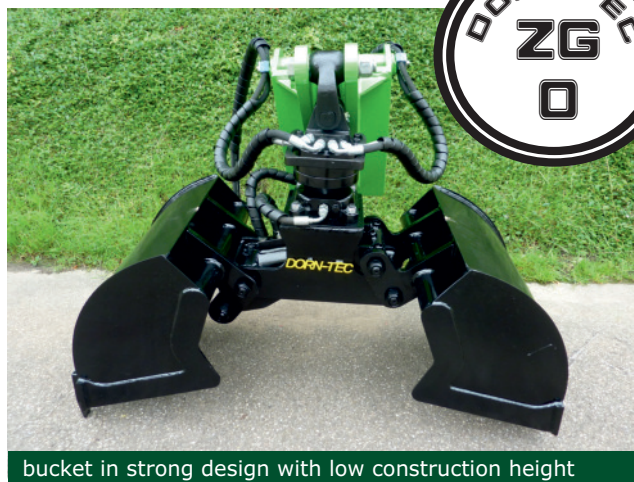
dimensional drawing



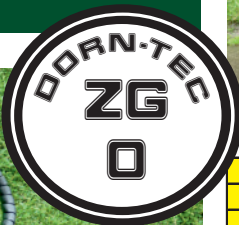
light version ZG OM



compact clamshell with strong bearing



bucket in strong design with low construction height



Type	Inhalt Capacity	Gewicht weight	Druck pressure	Abmessungen in mm. dimensions in mm.				
	LT	KG	MAX. BAR	A	B	C	D	L
ZG OM30	53	74	200	585	730	510	1060	330
ZG OM40	70	80	200	585	730	510	1060	430
ZG OM50	87	86	200	585	730	510	1060	530
ZG O30	100	130	200	670	830	530	1200	330
ZG O40	125	140	200	670	830	530	1200	430
ZG O50	150	150	200	670	830	530	1200	530
ZG O60	175	160	200	670	830	530	1200	630
ZG O70	200	190	200	670	830	530	1200	730
ZG O80	225	200	200	670	830	530	1200	830
ZG O600	250	215	200	900	1030	700	1450	630
ZG O800	310	240	200	900	1030	700	1450	830
ZG O1000	410	265	200	900	1030	700	1450	1030

changes reserved at any time

clamshell bucket with double cylinder

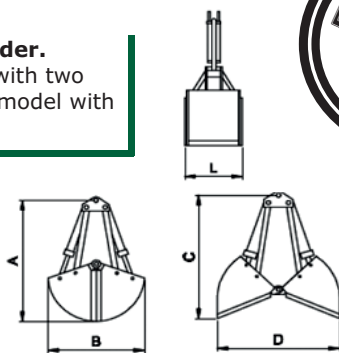
excavating grab

Clamshell bucket (ZG) Series T with double cylinder.

Clamshell for digging and loading. Excavating bucket with two semivertical cylinders for digging in hard soil. Special model with ejector available on demand.



hydraulic bucket with double cylinder for excavating



dimensional drawing



strong clamshell bucket for digging operations

Type	Inhalt	Gewicht	Druck	Abmessungen in mm.				
Type	Capacity	weight	pressure	dimensions in mm.				
	LT	KG	MAX. BAR	A	B	C	D	L
ZG TM25	20	60	200	780	525	650	550	260
ZG TM30	25	65	200	780	525	650	550	340
ZG TM40	30	70	200	780	525	650	550	440
ZG T30	100	150	200	1100	850	950	1080	330
ZG T40	125	160	200	1100	850	950	1080	430
ZG T50	150	170	200	1100	850	950	1080	530
ZG T60	175	180	200	1100	850	950	1080	630
ZG T80	200	215	200	1100	850	950	1080	830
ZG T100	250	230	200	1100	850	950	1080	1030
ZG T400	160	260	200	1300	1030	950	1300	430
ZG T600	300	360	200	1300	1280	950	1300	630
ZG T800	400	390	200	1300	1280	950	1300	830
ZG T1000	500	425	200	1300	1280	950	1300	1030
ZG T1200	600	460	200	1300	1280	950	1300	1230

bigger buckets on demand!

clamshell bucket heavy duty for higher volume

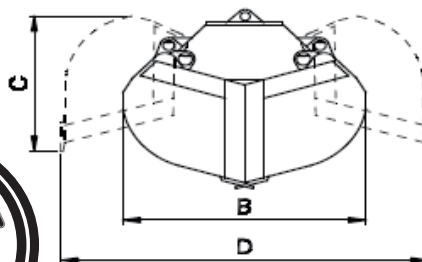
Clamshell bucket (ZG) Series OL / OP

- with one horizontal cylinder OL
 - with two horizontal cylinders OP
- Loading grab for heavy application. Bigger models on demand available.

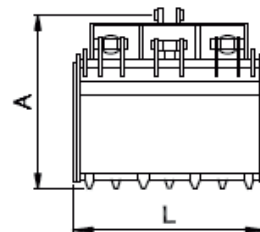
big volume clamshell bucket



heavy duty hydraulic bucket with big volume



dimensional drawing



Type	Inhalt	Gewicht	Druck	Abmessungen in mm.				
Type	Capacity	weight	pressure	dimensions in mm.				
	LT	KG	MAX. BAR	A	B	C	D	L
ZG OL1	300	315	200	910	1250	720	1750	640
ZG OL2	400	345	200	910	1250	720	1750	840
ZG OL3	500	375	200	910	1250	720	1750	1040
ZG OL4	600	400	200	910	1250	720	1750	1240
ZG OP1	400	500	200	930	1250	720	1750	840
ZG OP2	500	540	200	930	1250	720	1750	1040
ZG OP3	600	600	200	930	1250	720	1750	1240
ZG OP4	700	670	200	930	1250	720	1750	1440
ZG OP/M1	560	580	200	1130	1300	800	2100	840
ZG OP/M2	700	630	200	1130	1300	800	2100	1040
ZG OP/M3	840	680	200	1130	1300	800	2100	1240
ZG OP/M4	980	730	200	1130	1300	800	2100	1440

bigger buckets on demand!

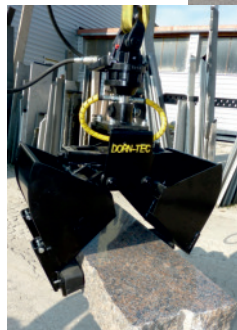
clamshell bucket for mini-excavator

Clamshell bucket (ZG) - series OSM / OSL - small version for mini-excavators. The top product of DORN-TEC 1000 times proven in the construction-, demolition-, gardening- and landscape industry. Grab with one horizontal cylinder with redirection for excavating and material handling. Special grippers with light weight, low profile and high performance. Optional: **rubber PAD's**

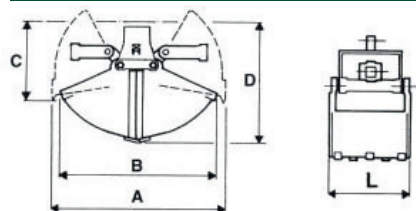


big performance - universal usage

clamshell with small dimensions and



flexible usage, low weight and low construction height for mini-excavators



dimensional drawing

Typ	Inhalt	Gewicht	Druck	Abmessungen in mm.				
Type	Capacity	weight	pressure	dimensions in mm.				
	LT	KG	MAX. BAR	A	B	C	D	L
ZG OSM250	35	65	200	800	650	460	620	260
ZG OSM300	40	70	200	800	650	460	620	310
ZG OSM400	55	75	200	800	650	460	620	410
ZG OSM500	65	85	200	800	650	460	620	510
ZG OSM600	70	90	200	800	650	460	620	610
ZG OSL30	80	155	200	1050	1020	480	730	330
ZG OSL40	110	170	200	1050	1020	480	730	430
ZG OSL50	140	185	200	1050	1020	480	730	530
ZG OSL60	170	200	200	1050	1020	480	730	630

clamshell bucket for loading and

excavating

Clamshell bucket (ZG) Series OS - in with one strong horizontal cylinder for excavating and loading different materials. For strong truck cranes and compact excavators.



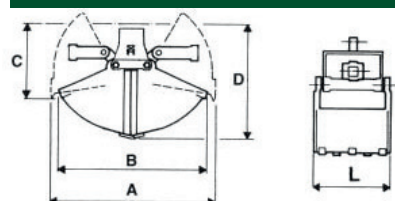
big horizontal cylinder with strong bearing



strong construction for heavy usage



optional equipment screwable teeth



dimensional drawing

Typ	Inhalt	Gewicht	Druck	Abmessungen in mm.				
Type	Capacity	weight	pressure	dimensions in mm.				
	LT	KG	MAX. BAR	A	B	C	D	L
ZG OS40	200	300	200	1470	1340	637	972	430
ZG OS50	250	320	200	1470	1340	637	972	530
ZG OS60	300	340	200	1470	1340	637	972	630
ZG OS70	350	360	200	1470	1340	637	972	730
ZG OS80	400	390	200	1470	1340	637	972	830
ZG OS90	450	405	200	1470	1340	637	972	930

changes reserved at any time

multi-purpose grab - small versions

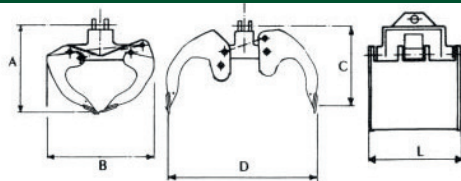
Multi-purpose clamshell bucket (ZG) - Series OA - with horizontal cylinder. Small versions with screwed side plates. Multi-purpose clamshell bucket with one horizontal cylinder for maintenance of open spaces for handling different materials.



screwed side plates offer various different applications



multi-purpose grab with open sides and screwable teeth



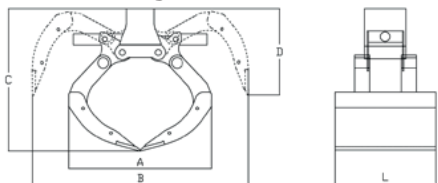
dimensional drawing



Type	Inhalt	Gewicht	Druck	Abmessungen in mm.				
Type	Capacity	weight	pressure	dimensions in mm.				
	LT	KG	MAX. BAR	A	B	C	D	L
ZG OAM30	55	70	200	585	730	510	1060	330
ZG OAM40	70	75	200	585	730	510	1060	430
ZG OAM50	90	80	200	585	730	510	1060	530
ZG OA30	100	110	200	670	830	530	1200	330
ZG OA40	125	120	200	670	830	530	1200	430
ZG OA50	150	130	200	670	830	530	1200	530
ZG OA60	175	140	200	670	830	530	1200	630
ZG OA70	200	170	200	670	830	530	1200	730
ZG OA80	225	180	200	670	830	530	1200	830
ZG OA600	250	200	200	900	1030	700	1350	630
ZG OA800	310	210	200	900	1030	700	1350	830
ZG OA1000	410	235	200	900	1030	700	1350	1030

multi-purpose grab - large versions

Clamshell bucket (ZG) - Series OB - with big horizontal cylinder. The multi functional grab for your loading crane. Large version with screwed side plates. Multi-purpose clamshell bucket with one strong horizontal cylinder for handling various materials on truck cranes and excavators. **The multifunction device for Your loading crane!**



dimensions



effective stone handling with open sides



Loose material handling
- with closed sides

Type	Inhalt	Gewicht	Druck	Abmessungen in mm.				
Type	Capacity	weight	pressure	dimensions in mm.				
	LT	KG	MAX. BAR	A	B	C	D	L
ZG OB60	300	400	200	1130	1600	1090	750	620
ZG OB80	400	430	200	1130	1600	1090	750	820
ZG OB100	500	470	200	1130	1600	1090	750	1020

changes reserved at any time



universal demolition and sorting grab

Universal stone grab with horizontal cylinder for all kinds of material handling.
Ideal working tool for sorting and handling various materials such as stones, wood, bushes and shrubbery. Very popular attachment in the gardening and landscaping field for setting stones and backfill with bulk material such as soil, sand, gravel, crushed stone, etc. in one step. Equipt with teeth it also allows excavation and other diverse applications. By mounting the grab in rigid attachment the gripper works as an

mechanical extension of the excavator. With an high-quality industrial rotator it allows high precision and speed working. The grabs are made of highly tempered quality steels as Domex / Weldox / Hardox steel. By default, 4 hydraulic lines are required.

With an additional valve, the gripper can also operate with only 2 connection lines. For demolition and sorting works, there is the version with perforated shells.

Larger grapples and **rubber PAD's** can be offered on demand.



Stone grab SG 300



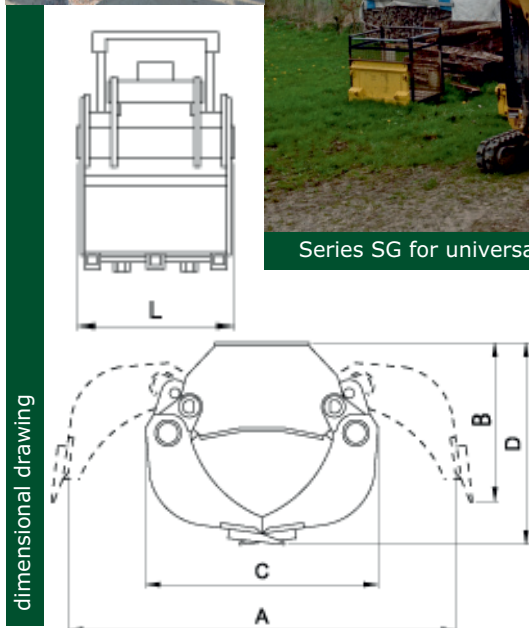
Stone grab SG 400



Stone grab SG 500



Stone grab with quick-coupler connection and closed peelings



Type	Bagger	Gewicht	Druck	Abmessungen in mm.				
Type	excavator	weight	pressure	dimensions in mm.				
	Ton.	KG	MAX. BAR	A	B	C	D	L
SG 250	1 - 2	65	200	800	460	650	620	265
SG 300	1 - 4	75	200	875	550	560	570	330
SG 400	2 - 6	165	200	1100	550	650	650	440
SG 500	5 - 9	215	200	1350	800	730	680	540
SG 600	6 - 10	285	200	1500	700	960	800	640
SG 750	6 - 10	330	200	1500	700	960	800	740
SG 500S	5 - 9	300	200	1350	710	900	750	500
SG 600S	8 - 12	400	200	1600	830	1060	880	600
SG 650S	10 - 18	600	200	1800	950	1200	1000	650

changes reserved at any time

felling grab with chain saw



We offer a comprehensive range of felling grabs with auto-matic chain saw. All grapple saws of DORN-TEC can be quickly and easily installed on different machines - truck cranes, telescopic loaders, forwarders, excavators, forestry trailers, etc. They allow a safe way to remove trees in difficult places. These grapple saws are suitable for felling and removing of trees and branches, in parks, gardens and near power lines. All grapples can be used as a timber grab for loading works. The heads allow to cut and loaded in one single operation. The wood must not be cut

manually before. Delivery will be made as a complete mounting kit with hydraulic control valves and electrical system. It has no need for any extra hydraulics and it requires a low oil torrent. That makes it very easy to install. With the integrated tilt function also standing timber can be harvested.

Problem felling and thinning can be achieved safely and effectively with our grapple saws!



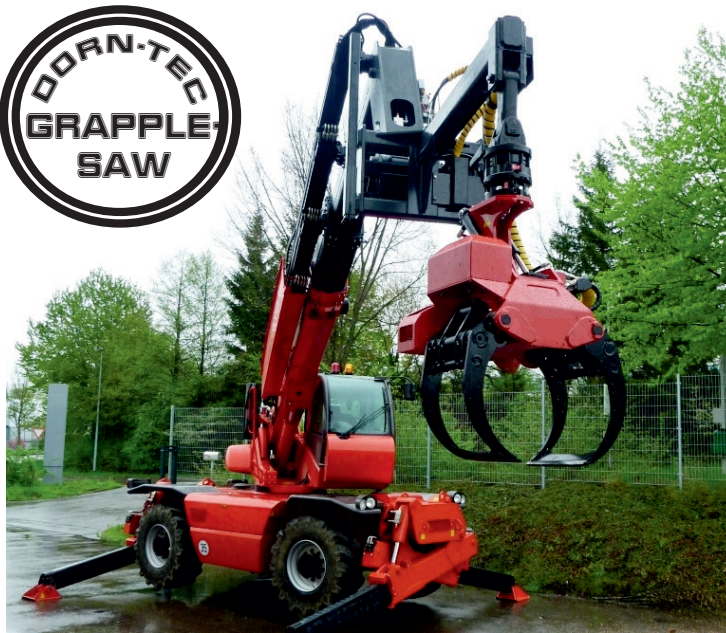
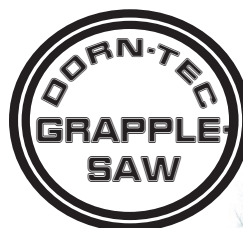
high performance timber grapple with chain saw and tiltfunction



professional control for max. flexibility and performance



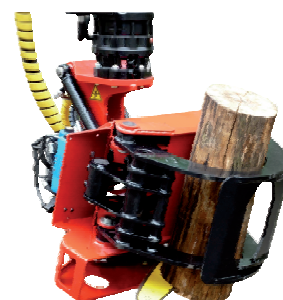
grapple saw with harvester sword for professional felling



felling head in use on a telescopic loader

Type	Schnitt	Schnittmesser	Tilt	Greifer	Ölmenge	Druck	Gewicht
Type	cutting	cutting unit	tilt	grapple	oil flow	pressure	weight
	Ø			mm	l/min.	max. bar	kg
EG350	400	Kettensäge	inkl.	900	40 - 80	200	190
EG450	450	Kettensäge	inkl.	1200	40 - 80	200	260
EG550	550	Kettensäge	inkl.	1550	50 - 100	200	335
EG450X	250/450	Messer+Säge	inkl.	900/1200	60 - 100	200	350
SH400S	400	Säge+Entaster	inkl.	430	45 - 80	180	300

changes reserved at any time



Grapple saw in use

energy wood grapple / cutting grab

Energy wood grapple EG

The energy wood grapples are multipurpose devices for felling and loading of wood. They are used for maintenance work in the bushes and energy-wood harvesting. You can do felling and loading work with one device. Cutting will be made with a fixed or hydraulic knife. With the integrated tilt function it is possible to change between felling and loading works.

Cut Tree shear CT

We offer a comprehensive range of cutting grippers for excavator mounting. The cutting grippers are mounted with the direct connection or with an appropriate quick-change adapter to the excavators. The cut tree grabs are equipped with a gripper and a cutting unit. The cut branches, timber or tree trunks are lifted and transported directly with the excavator. The control for the gripper is included in the machine, so you need only one double-acting outlet. Due to two big hydraulic cylinders the cut tree units have a lot of cutting power.



energy wood grapple with hydr./fixed knife / with tilt function or rigid attachment



cutting grabs CT for excavators

Typ	Schnitt	Messer	Anbau / attach	Bagger	Ölmenge	Druck	Gewicht
Type	cutting	knife	fix	tilt	excavator	oil flow	pressure
	Ø					l/min.	max. bar
EG200C	200	fest	X	X	3 - 9to.	30 - 60	200-230
EG250C	250	fest	X	X	5 - 11to.	40 - 70	200-230
EG150B	150	hydr.	X	X	2 - 5to.	30 - 60	170-200
EG200B	200	hydr.	X	X	3 - 9to.	35 - 60	180-220
EG250B	250	hydr.	X	X	5 - 10to.	40 - 80	190-240
EG300B	300	hydr.	X	X	7 - 15to.	50 - 100	200-250
CT350	350	hydr.	X	---	8 - 12to.	40 - 80	250
CT400	400	hydr.	X	---	12 - 16to.	80 - 120	250
CT450	450	hydr.	X	---	16 - 25to.	100 - 140	280
							kg

harvester heads

Stroke harvester SH

The stroke harvester is a machine, which fells, delimbs and cuts trees to length. The stroke harvester can be easily installed on every standard loader. The stroke harvester has a lot of delimbing power. The harvester has an automatic stroke and the tree can be delimbed with a one-button function. That makes the production highly efficient.

Roll harvester RH. for quick delimbing.



stroke harvester mounted on an excavator



stroke harvester for delimbing and cutting trees



roll harvester

Typ	Schnitt	Entaster	Entaster	Schub	Tilt	Greifer	Ölmenge	Druck
Type	cutting	delimb.	delimbin	stroke	tilt	grapple	oil flow	pressure
	mm		mm / kN	mm		mm	l/min.	max. bar
SH 400S	400	Schub	Ø360 / 22	660	inkl.	430	45 - 80	180
SH 550S	550	Schub	Ø450 / 35	660	inkl.	550	80 - 120	180
RH 275R	280	Rolle	Ø240 / 8	3 m/s	inkl.	---	120	200
RH 375R	360	Rolle	Ø320 / 12	4 m/s	inkl.	---	150	200

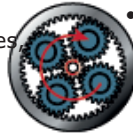
changes reserved at any time

earth drills



Our offer includes auger in a simple and professional version. The auger can easily and quickly be adapted to different carrier machines, such as cranes, excavators, farm loaders, wheel loaders, telescopic loaders etc. There are a variety of applications in the gardening-, landscaping-, forestry-, municipal- and construction industry. The earth drills are used for planting holes, point foundations, fence building, pole holes etc .. The selection of the particular drill is done individually - depending on the application, duration and carrier machine.

- auger types 100, 150, 200, 250, 300, 350, 400, 500 mm ..
- carriers from 1.2 to 45,0to. excavator
- versions with direct or quick-change attachment
- use for simple drilling or professional earthmoving
- optional: pile auger, alignment monitor, etc.



high performance gearbox drives - here in use on an excavator



auger use on a backhoe loader



adaptation made by DORN-TEC - augers in use on a front or wheel loader



auger pilots



mini-excavator usage



auger with gearbox drive in use on a truck crane

Type	Bagger	Drehmoment	Druck	Ölmenge	Schaftwelle	Gewicht	Schnecke	Schnecke
Type	excavator	max. torque	pressure	oil flow	Hub	weight	drill	drill
	Ton.	Nm	max. bar	l/min.	STD	KG	ø mm	Kat.
KS1	0,8 - 2,0	1.500	205	20 - 45	2" HEX	46	100-400	S
KS2	1,5 - 3,0	2.500	240	27 - 65	2" HEX	55	100-500	S
KS3	2,5 - 5,0	3.500	240	40 - 85	2" HEX	70	100-750	S
KS4	3,0 - 5,0	4.500	240	50 - 95	2" HEX	75	100-900	S
KS5	4,5 - 7,0	5.000	240	40 - 95	75er 4-Kant	108	150-600	M
KS7	5,0 - 9,0	7.000	260	50 - 115	75er 4-Kant	110	150-800	M
KS8	6,0 - 10,0	8.300	240	70 - 150	75er 4-Kant	115	150-900	M
KS12	10,0 - 17,0	12.000	240	70 - 150	75er 4-Kant	165	150-1000	L
KS20	13,0 - 20,0	20.000	240	80 - 170	75er 4-Kant	185	150-1200	L



stump removal drills

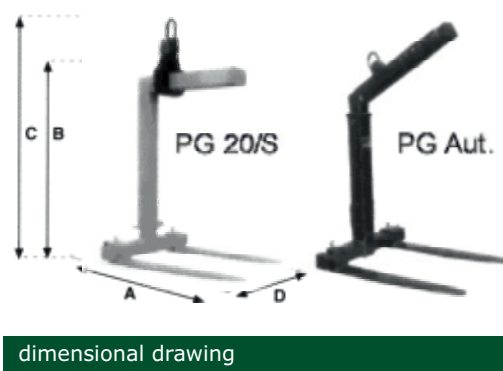
Änderungen vorbehalten

Bigger earth drills on demand!

palett forks for cranes

Crane pallet forks from DORN-TEC for loading goods with cranes. There are three basic versions with an eye connection, an adjustable safety claw with rotator connection and with

automatic spring balancing. All forks are equipped with an adjustable handle and tines.



Typ	Tragkraft	Gewicht	Abmessungen in mm.			
Type	Lifting cap.	weight	dimensions in mm.			
	KG	KG	A	B	C	D
KPG 10	1000	100	1080	1100	1700	950
KPG 15	1500	125	1080	1100	1700	950
KPG 20	2000	155	1080	1100	1700	950
KPG 20/S	2000	160	1080	1100	1700	950
KPG15 Aut.	1500	150	1000	1300	2000	900
KPG20 Aut.	2000	200	1000	1300	2000	900
KPG30 Aut.	3000	250	1000	1300	2000	900
KPG40 Aut.	4000	315	1000	1300	2000	950
KPG50 Aut.	5000	355	1000	1300	2000	1000

quick-coupler attachments

The company DORN-TEC has specialized his production and manufacturing on tools and attachments for mini- and compact-excavators up to 16 tons. This primarily involves the production of various quick-coupler adapters like Lehnhoff, Schaeff / Terex, Verachtart, Martin, Neuson, Wacker, Liebherr, Volvo, Nado, Morin, VTN, etc.

Ask us to an adapter for your wheel or telescopic loader!



changes reserved at any time



digging bucket



pivoting ditch cleaning bucket



trapezoidal bucket



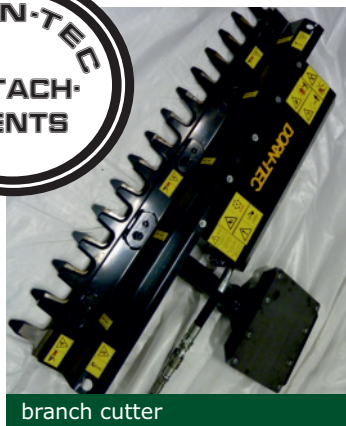
ripper



hydraulic lifting winch



pole and tube grab



branch cutter



cutting head



screening bucket



concrete mixing bucket



hydraulic hammers



forestry mulcher



wood splitter



hydraulic stump cutter



snow plug



stump removal drills



earth drills

changes reserved at any time

How you find the right way to us

Our premises accommodates space for a machinery hall, spare parts warehouse, workshop and administration. The DORN-TEC cooperation takes regularly part on international tradeshow and fairs, e.g. ForstLive, GalaBau, KWF show, Agritechnica, Interforst, Bauma, etc. **Just visit us ...**
... or let us know your inquiry!

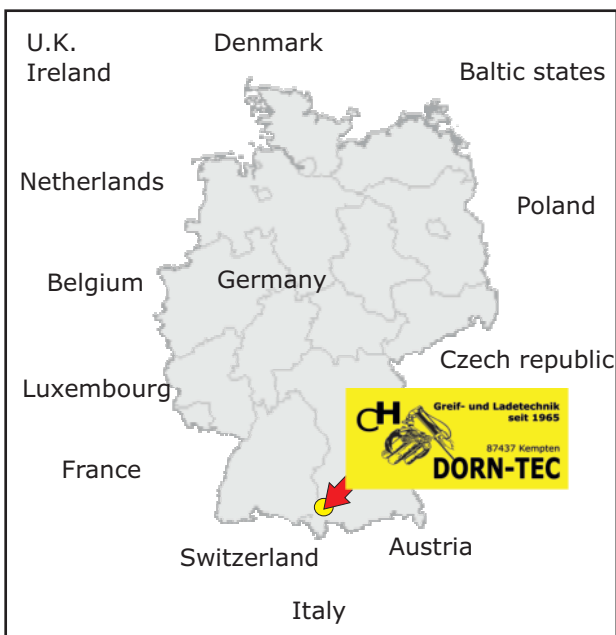
DORN-TEC GmbH & Co. KG
Porschestraße 21
D-87437 Kempten
Tel. +49-831-77124
Fax. +49-831-79684
E-mail: info@dorn-tec.de



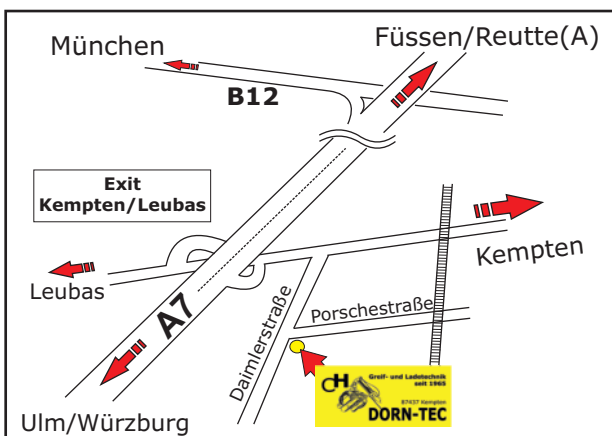
modernized factory building of DORN-TEC



independent premises and own vehicle fleet



trade fair booth indoor

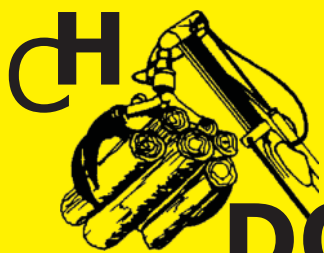


Changes, errors, misprints and innovations at any time reserved! Reproductions, copies, duplications and reprints totally or partly are only allowed with the permission of the DORN-TEC GmbH&Co.KG cooperation.



trade fair booth outdoor

50 years of experience in production & technology



grab- and loading
technology
since 1965

DORN-TEC

DORN-TEC GmbH & Co. KG
Porschestraße 21
D-87437 Kempten
Tel. +49-831-77124
Fax +49-831-79684
info@dorn-tec.de



Here you can
find our
webpage!

sales:

www.dorn-tec.de / www.dorn-tec.com